

XIX. Faction that ever dwells

Canto.

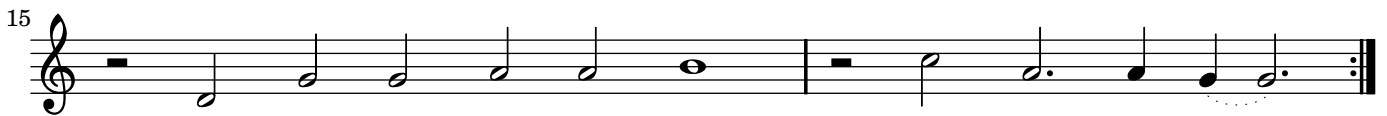
John Dowland



- | | | | | | | | | | | | |
|---------------|-----------|-----------|---------|-----------|-------|---------|----------|-----------|-------|-----|------|
| 1. Fact- ion | that | e- ver | dwells, | In | court | where | wits | ex- cells | | | |
| 2. For- tunes | sweares, | weak- est | harts | The | booke | of | Cu- pids | arts | | | |
| 3. This | dis- cord | it | be- get | A- theist | that | ho- nor | not | | | | |
| 4. So | to | the | wood | went | I | With | love | to | live | and | die |
| 5. My | saint | is | deere | to | mee, | And | love | hir | selfe | is | shee |



- | | | | | | | | | |
|-----------|-------------|----------------|-----------|-----------|--------------|-------|--------|---------|
| hath | set | de- | fi- ance, | For- tune | and | love | hath | sworne, |
| Turne | with | hir | whee- le, | Sen- ces | them- selves | shall | prove | |
| Na- ture | thought | good, | For- tune | should | e- ver | dwell | | |
| For- tune | for- lorne. | Ex- per- ience | of | my | youth | | | |
| Jone | faier | and | true, | Jone | that | doth | e- ver | move |



- | | | | | | | | | |
|------------|-------|--------|----------|----------|-----------|----------|--------------|----------|
| That | they | were | ne- ver | borne, | of | one | a- li- ance. | |
| Ven- ture | hir | place | in | love | Aske | them | that | fee- le. |
| In | court | where | wits | ex- cell | Love | keepe | the | wood. |
| Made | me | thinke | hum- ble | truth | In | de- sert | borne. | |
| Pas- sions | of | love | with | love | For- tune | a- diew. | | |

XVIII. Faction that ever dwells

Alto.

John Dowland



1. Fact-ion that e-ver dwells, In court where wits ex-cells,
2. For-tunesweares, weak-est harts The booke of Cu-pids arts
3. This dis-cord it be-get A-theist that ho-nor not
4. So to the wood went I With love to live and die
5. My saint is deere to mee, And love hir selfe is shee



Hath set de-fi-ance, For-tune and love hathsworne,
Turne with hir wheele, Sen-ces them-selves shall prove
Na-ture thought good, For-tunes should e-ver dwell
For-tune for-lorne. Ex-per-i-ence of my youth
Jone faier and true, Jone that doth e-ver move

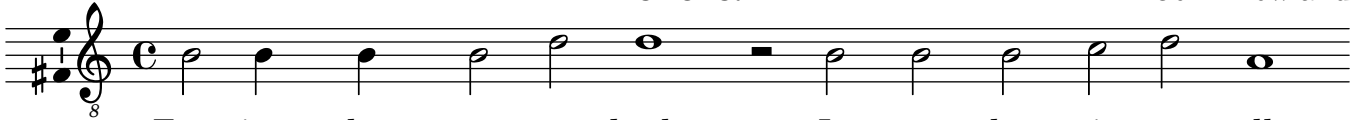


That they were ne-ver borne, of one a-li-ance.
Ven-ture hir place in love Aske them that feele.
In court where wits ex-cell Love keepe the wood.
Made me thinke hum-ble truth In de-sert borne.
Pas-sions of love with love For-tune a-diew.

XVIII. Faction that ever dwells

Tenore.

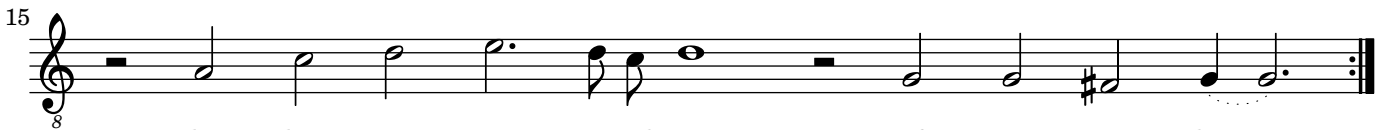
John Dowland



1. Fact- ion that e- ver dwells, In court where wits ex- cells,
2. For- tunesweares, weak- est harts The booke of Cu- pids arts
3. This dis- cord it be- get A- theist that ho- nor not
4. So to the wood went I With love to live and die
5. My saint is deere to mee, And love hir selfe is shee



Hath set de- fi-ance, For- tune and love hath sworne,
Turne with hir wheele, Sen- ces them-selves shall prove
Na- ture thought good, For- tunes should e- ver dwell
For- tune for- lorne. Ex- per- ience of my youth
Jone faier and true, Jone that doth e- ver move

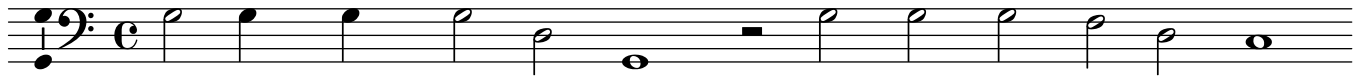


That they were ne- ver borne, of one a- li-ance.
Ven- ture hir place in love Aske them that feele.
In court where wits ex- cell Love keepe the wood.
Made me thinke hum- ble truth In de- sert borne.
Pas- sions of love with love For- tune a- diew.

XVIII. Faction that ever dwells

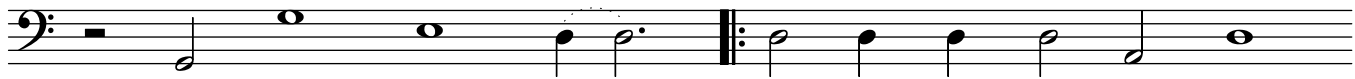
Basso.

John Dowland



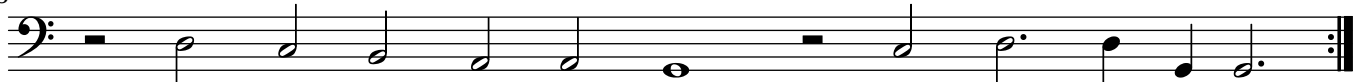
- | | |
|--------------------------------------|--------------------------------|
| 1. Fact- ion that e- ver dwells, | In court where wits ex- cells, |
| 2. For- tunesweares, weak- est harts | The booke of Cu- pids arts |
| 3. This dis- cord it be- get | A- theist that ho- nor not |
| 4. So to the wood went I | With love to live and die |
| 5. My saint is deere to mee, | And love hir selfe is shee |

8



- | | |
|------------------------|-----------------------------------|
| Hath set de- fi- ance, | For- tune and love hath sworne, |
| Turne with hir wheele, | Sen- ces them- selves shall prove |
| Na- ture thought good, | For- tunes should e- ver dwell |
| For- tune for- lorne. | Ex- per- ience of my youth |
| Jone faier and true, | Jone that doth e- ver move |

15



- | | |
|-------------------------------|-----------------------|
| That they were ne- ver borne, | of one a- li- ance. |
| Ven- ture hir place in love | Aske them that feele. |
| In court where wits ex- cell | Love keepe the wood. |
| Made me thinke hum- ble truth | In de- sert borne. |
| Pas- sions of love with love | For- tune a- diew. |