

What strikes the clocke?

Superius Edward Gibbons (1568-circa. 1650)

10

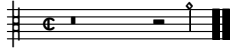
17

23

29

33

38



What strikes the clocke?

Tenor

Edward Gibbons (1568-circa. 1650)

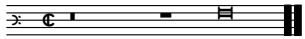
1 1 2 1 2 3 1 2 3 4 1 2 3

10
4 5 1 2 3 4 5 6 1 2 3 4 5 6 7 1 2 3

19
4 5 6 7 8 1 2 3 4 5 6 7 8 9 1 2

27
3 4 5 6 7 8 9 10 1 2 3 4 5 6 7 8

35
9 10 11 1 2 3 4 5 6 7 8 9 10 11 12



What strikes the clocke?

Bassus

Edward Gibbons (1568-circa. 1650)

11

18

25

31

37

What strikes the clocke?

Edward Gibbons (1568-circa. 1650)

1 1 2 1 2 3 1 2 3 4 1 2 3 4 5 1 2

3 4 5 6 1 2 3 4 5 6 7 1 2 3 4 5 6 7 8 1

2 3 4 5 6 7 8 9 1 2 3 4 5 6 7 8

9 10 1 2 3 4 5 6 7 8 9 10 11 1

2 3 4 5 6 7 8 9 10 11 12