

5. The Cradle.

CANTVS.

Antony Holborne

10

21

31

39

5. The Cradle.

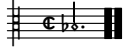
QUINTUS.

Antony Holborne

13

26

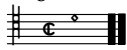
37



5. The Cradle.

ALTUS.

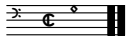
Antony Holborne



5. The Cradle.

TENOR.

Antony Holborne



5. The Cradle.

BASSVS.

Antony Holborne

17

33

5. The Cradle.

Antony Holborne

The image displays a musical score for the piece "The Cradle" by Antony Holborne. The score is arranged in a single system with 14 staves. The first five staves (1-5) represent the first system of music, and the remaining nine staves (6-14) represent the second system. The music is written in a common time signature (C) and features a variety of rhythmic values including quarter, eighth, and sixteenth notes, as well as rests. The notation includes treble and bass clefs, and various accidentals such as sharps and naturals. The piece concludes with a double bar line and repeat signs in the final measures of the second system.

The image displays a page of musical notation for a string quartet, consisting of 16 staves. The notation is arranged in four systems of four staves each. The first system (staves 1-4) begins with a treble clef on the first staff and a bass clef on the fourth staff. The music features a variety of note values, including quarter, eighth, and sixteenth notes, as well as rests. A double bar line with repeat dots is used to indicate a first ending. The second system (staves 5-8) continues the piece with similar rhythmic patterns and includes a sharp sign (#) on the second staff. The third system (staves 9-12) shows further melodic and harmonic development. The fourth system (staves 13-16) concludes the page with final notes and rests, each ending with a double bar line and repeat dots. The overall style is that of a classical or contemporary string quartet score.