

# 15. Pavan.

CANTVS.

Antony Holborne

# 15. Pavan.

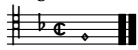
ALTUS.

Antony Holborne



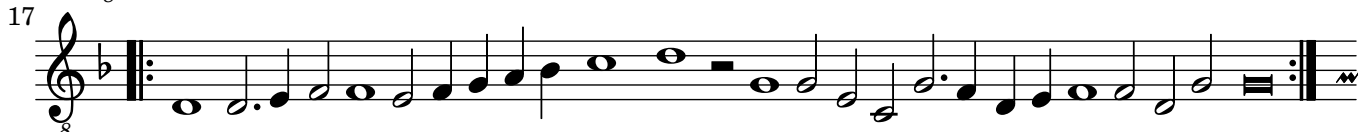
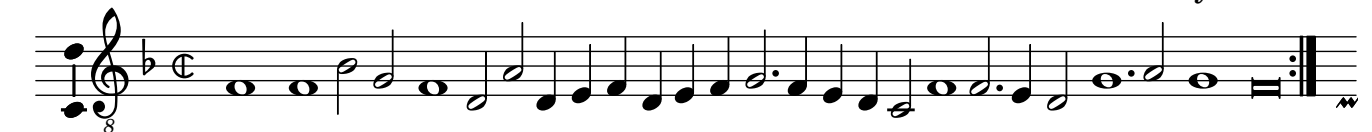
# 15. Pavan. QUINTUS.

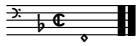
Antony Holborne



# 15. Pavan. TENOR.

Antony Holborne





# 15. Pavan.

BASSVS.

Antony Holborne

17

34

# 15. Pavan.

Antony Holborne

The musical score for '15. Pavan.' by Antony Holborne is presented in five systems. Each system consists of two staves: a treble clef staff on top and a bass clef staff on the bottom. The key signature is one flat (B-flat), and the time signature is common time (C). The music is written in a style characteristic of the English lute tablature tradition, with a focus on rhythmic patterns and melodic lines. The score includes various note values, rests, and repeat signs (double bar lines with dots) indicating sections to be repeated. The piece concludes with a final cadence in the bass staff of the fifth system.

A musical score consisting of five staves. The first staff is in treble clef with a key signature of one flat (F major). The second staff is in alto clef (C4) with a key signature of one flat. The third staff is in treble clef with a key signature of one flat. The fourth staff is in treble clef with a key signature of one flat. The fifth staff is in bass clef with a key signature of one flat. The music is written in 4/4 time and features a variety of note values including quarter, eighth, and sixteenth notes, as well as rests. The score concludes with a double bar line and repeat dots on each staff.