



21. Infernum.

CANTVS.

Antony Holborne

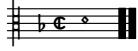
Musical score for the Cantus part of '21. Infernum.' by Antony Holborne. The score is written in treble clef, one flat key signature, and common time. It consists of four staves of music. The first staff begins with a treble clef, one flat, and common time. The second staff is marked with the number 18. The third staff is marked with the number 29. The fourth staff is marked with the number 41. The score concludes with a double bar line and repeat dots.

21. Infernum.

ALTUS.

Antony Holborne

Musical score for the Altus part of '21. Infernum.' by Antony Holborne. The score is written in treble clef, one flat key signature, and common time. It consists of four staves of music. The first staff begins with a treble clef, one flat, and common time, and includes a flat symbol above the first measure. The second staff is marked with the number 11 and includes a flat symbol above the first measure. The third staff is marked with the number 24 and includes a flat symbol above the first measure. The fourth staff is marked with the number 32 and includes flat symbols above the first and second measures. The fifth staff is marked with the number 43 and includes flat symbols above the first and second measures. The score concludes with a double bar line and repeat dots.



21. Infernum.

QUINTUS.

Antony Holborne

10

22

31

41

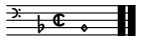


21. Infernum.

TENOR.

Antony Holborne

Musical score for Tenor part of '21. Infernum.' by Antony Holborne. The score consists of five staves of music in treble clef, one flat key signature, and common time. The first staff begins with a treble clef, a key signature of one flat, and a common time signature. The music features a mix of quarter, eighth, and sixteenth notes, with some rests. The score is divided into measures, with measure numbers 11, 22, 33, and 43 indicated at the start of their respective staves. The piece concludes with a double bar line and repeat dots.



21. Infernum.

BASSVS.

Antony Holborne

Musical score for Bass part of '21. Infernum.' by Antony Holborne. The score consists of four staves of music in bass clef, one flat key signature, and common time. The first staff begins with a bass clef, a key signature of one flat, and a common time signature. The music features a mix of quarter, eighth, and sixteenth notes, with some rests. The score is divided into measures, with measure numbers 18, 29, and 41 indicated at the start of their respective staves. The piece concludes with a double bar line and repeat dots.

21. Infernum.

Antony Holborne

The image displays a musical score for the piece "21. Infernum." by Antony Holborne. The score is arranged in a single system with 14 staves. The first four staves are grouped together, as are the last four staves. The music is written in a key signature of one flat (B-flat) and a common time signature (C). The notation includes various rhythmic values such as quarter, eighth, and sixteenth notes, as well as rests and accidentals. The piece concludes with double bar lines and repeat signs at the end of several staves.

The image displays a page of musical notation for a five-part ensemble, organized into three systems of staves. Each system contains five staves, with the top four staves in treble clef and the bottom staff in bass clef. The key signature is one flat (B-flat). The notation includes various rhythmic values: quarter notes, eighth notes, sixteenth notes, and rests. There are also repeat signs (double bar lines with dots) and dynamic markings such as *mf* and *f*. The music is written in a style typical of contemporary chamber music.

A musical score consisting of five staves. The first four staves use a treble clef, and the fifth staff uses a bass clef. The key signature is one flat (F major or D minor), and the time signature is 4/4. The music is written in a single system and concludes with a double bar line and repeat dots. The notation includes various note values such as quarter, eighth, and sixteenth notes, as well as rests and accidentals.