

23. Spero.

CANTVS.

Antony Holborne

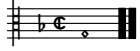
Musical score for the Cantus part of '23. Spero.' by Antony Holborne. The score is written in treble clef, one flat key signature, and common time. It consists of five staves of music. The first staff begins with a treble clef, one flat key signature, and common time. The second staff starts at measure 12, the third at 22, the fourth at 33, and the fifth at 42. The piece concludes with a double bar line.

23. Spero.

ALTUS.

Antony Holborne

Musical score for the Altus part of '23. Spero.' by Antony Holborne. The score is written in treble clef, one flat key signature, and common time. It consists of four staves of music. The first staff begins with a treble clef, one flat key signature, and common time. The second staff starts at measure 12, the third at 27, and the fourth at 41. The piece concludes with a double bar line.



23. Spero.
QUINTUS.

Antony Holborne

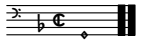
Musical score for Quintus part of '23. Spero.' by Antony Holborne. The score is written in treble clef, one flat key signature, and common time. It consists of four staves of music. The first staff begins with a treble clef, one flat, and common time. The second staff is marked with a '15' and a 'g' below the staff. The third staff is marked with a '28' and a 'g' below the staff. The fourth staff is marked with a '43' and a 'g' below the staff. The score includes various rhythmic values, including eighth and sixteenth notes, and rests. It concludes with a double bar line and repeat signs.



23. Spero.
TENOR.

Antony Holborne

Musical score for Tenor part of '23. Spero.' by Antony Holborne. The score is written in treble clef, one flat key signature, and common time. It consists of four staves of music. The first staff begins with a treble clef, one flat, and common time. The second staff is marked with a '13' and a 'g' below the staff. The third staff is marked with a '25' and a 'g' below the staff. The fourth staff is marked with a '39' and a 'g' below the staff. The score includes various rhythmic values, including eighth and sixteenth notes, and rests. It concludes with a double bar line and repeat signs.



23. Spero.

BASSVS.

Antony Holborne

19

37

23. Spero.

Antony Holborne

The image displays a musical score for the piece "23. Spero." by Antony Holborne. The score is organized into five systems, each consisting of five staves. The notation is written in a single clef system, likely for a lute or similar instrument, with a key signature of one flat (B-flat) and a common time signature (C). The music features a variety of rhythmic values, including eighth, sixteenth, and thirty-second notes, as well as rests and accidentals. The score includes repeat signs and double bar lines, indicating specific sections and endings. The overall style is characteristic of the English lute repertoire of the late 16th century.

The image displays a page of musical notation for a five-part setting, organized into three systems. Each system consists of five staves, with the top two staves in treble clef and the bottom three in bass clef. The music is written in a minor key, indicated by a single flat in the key signature. The notation includes a variety of rhythmic values such as quarter, eighth, and sixteenth notes, as well as rests and dynamic markings. The first system begins with a treble clef staff containing a melodic line, followed by four bass clef staves providing harmonic support. The second system features more complex rhythmic patterns, including sixteenth-note runs in the upper staves. The third system concludes the page with a final cadence across all staves.