

34. Muy Linda

CANTVS.

Antony Holborne

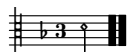
7
11
17

34. Muy Linda

ALTUS.

Antony Holborne

6
11
17



34. Muy Linda

QUINTUS.

Antony Holborne

Musical score for Quintus part of 'Muy Linda'. It consists of four staves of music in treble clef, one flat key signature, and 3/4 time signature. The first staff starts at measure 1 and ends with a double bar line. The second staff starts at measure 7 and ends with a double bar line. The third staff starts at measure 12 and ends with a double bar line. The fourth staff starts at measure 18 and ends with a double bar line.

34. Muy Linda

TENOR.

Antony Holborne

Musical score for Tenor part of 'Muy Linda'. It consists of three staves of music in treble clef, one flat key signature, and 3/4 time signature. The first staff starts at measure 1 and ends with a double bar line. The second staff starts at measure 8 and ends with a double bar line. The third staff starts at measure 16 and ends with a double bar line.

34. Muy Linda

BASSVS.

Antony Holborne

Musical score for Bass part of 'Muy Linda'. It consists of three staves of music in bass clef, one flat key signature, and 3/4 time signature. The first staff starts at measure 1 and ends with a double bar line. The second staff starts at measure 8 and ends with a double bar line. The third staff starts at measure 16 and ends with a double bar line.

34. Muy Linda

Antony Holborne

The musical score for 'Muy Linda' by Antony Holborne is presented in 3/4 time with a key signature of one flat (B-flat). The score consists of 14 staves, organized into two systems of seven staves each. The first system (staves 1-7) begins with a treble clef and a 3/4 time signature. The second system (staves 8-14) begins with a double bar line and a key signature change to one flat. The notation includes various rhythmic values such as quarter, eighth, and sixteenth notes, as well as rests and repeat signs. The piece concludes with a final double bar line and repeat sign on the 14th staff.

A musical score consisting of five staves. The first staff is a vocal line in G major, 4/4 time, starting with a whole rest followed by a series of quarter and eighth notes. The second staff is a piano accompaniment line with a similar rhythmic pattern. The third and fourth staves are additional piano accompaniment parts. The fifth staff is a bass line. The key signature has one sharp (F#) and the time signature is 4/4. The score concludes with a double bar line and repeat dots.