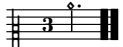


36. My selfe.

CANTVS.

Antony Holborne

Musical score for the Cantus part of '36. My selfe.' by Antony Holborne. The score is written in treble clef, 3/4 time, and one sharp (F#). It consists of four staves of music. The first staff begins with a treble clef, 3/4 time signature, and a key signature of one sharp. The music features a mix of quarter, eighth, and sixteenth notes, with some rests. There are repeat signs (double bar lines with dots) at measures 7 and 13. The piece concludes with a double bar line and repeat dots.

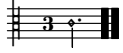


36. My selfe.

ALTUS.

Antony Holborne

Musical score for the Altus part of '36. My selfe.' by Antony Holborne. The score is written in treble clef, 3/4 time, and one sharp (F#). It consists of four staves of music. The first staff begins with a treble clef, 3/4 time signature, and a key signature of one sharp. The music features a mix of quarter, eighth, and sixteenth notes, with some rests. There are repeat signs (double bar lines with dots) at measures 7 and 13. The piece concludes with a double bar line and repeat dots.



36. My selfe. QUINTUS.

Antony Holborne

9

19

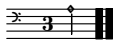
36. My selfe. TENOR.

Antony Holborne

7

14

21



36. My selfe.

BASSVS.

Antony Holborne

10

19

36. My selfe.

Antony Holborne

The musical score for "My selfe." by Antony Holborne is presented in 3/4 time. It consists of 14 staves of music, arranged in two systems of seven staves each. The first system includes a treble clef with a key signature of one sharp (F#) and a 3/4 time signature. The music is written in a style characteristic of the English lute or keyboard repertoire of the 16th century, featuring a mix of eighth and sixteenth notes, often beamed together. The second system continues the piece, marked with repeat signs (double bar lines with dots) and includes some chromaticism, such as the use of F# and G# notes. The piece concludes with a final cadence on a whole note chord.

The image shows a musical score for five staves. The top four staves are in treble clef, and the bottom staff is in bass clef. The music is written in a key with one sharp (F#) and a common time signature. The notation includes various note values, rests, and accidentals, ending with repeat signs on each staff.