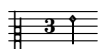


## 63. The Fairie-round.

CANTVS.

Antony Holborne

Musical score for the Cantus part of 'The Fairie-round'. It consists of four staves of music in 3/4 time. The first staff begins with a treble clef and a 3/4 time signature. The music is written in a single melodic line. Measure numbers 7, 13, and 20 are indicated on the left side of the staves. The piece concludes with a double bar line and repeat dots.



## 63. The Fairie-round.

ALTUS.

Antony Holborne

Musical score for the Altus part of 'The Fairie-round'. It consists of four staves of music in 3/4 time. The first staff begins with a treble clef and a 3/4 time signature. The music is written in a single melodic line. Measure numbers 8, 14, and 20 are indicated on the left side of the staves. The piece concludes with a double bar line and repeat dots.

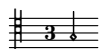


## 63. The Fairie-round.

QUINTUS.

Antony Holborne

Musical score for Quintus part of 'The Fairie-round'. The score is written in treble clef with a 3/4 time signature. It consists of four staves of music. The first staff begins with a treble clef and a 3/4 time signature. The second staff starts at measure 7, the third at measure 13, and the fourth at measure 20. The piece concludes with a double bar line and repeat dots.

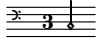


## 63. The Fairie-round.

TENOR.

Antony Holborne

Musical score for Tenor part of 'The Fairie-round'. The score is written in treble clef with a 3/4 time signature. It consists of five staves of music. The first staff begins with a treble clef and a 3/4 time signature. The second staff starts at measure 5, the third at measure 10, the fourth at measure 15, and the fifth at measure 20. The piece concludes with a double bar line and repeat dots.



# 63. The Fairie-round.

BASSVS.

Antony Holborne

9

16

# 63. The Fairie-round.

Antony Holborne

The musical score for 'The Fairie-round' by Antony Holborne is presented in 3/4 time. It consists of 14 staves of music. The first five staves represent the initial section of the piece, which is a single melodic line in the treble clef. The sixth staff begins a section with repeat signs, where the melody is divided into four parts across the remaining staves. The first part of this section is in the treble clef, and the subsequent three parts are in the bass clef. The piece concludes with a final double bar line and repeat sign at the end of the 14th staff.

The image shows a musical score for five staves. The top four staves are in treble clef, and the bottom staff is in bass clef. The music is written in a single system and ends with a double bar line and repeat dots. The notation includes various note values such as quarter, eighth, and sixteenth notes, as well as rests and accidentals.