

# Canzon ottava: La Banchierina

Canto

Adriano Banchieri (1568 - 1634)

Canzoni alla francese, 1596, Venice

① 2 3 4

Musical score for 'Canzon ottava: La Banchierina' in Canto. The score is written in treble clef, one flat key signature, and common time. It consists of 11 staves of music, with measure numbers 6, 14, 20, 27, 33, 40, 47, 54, 61, 69, and 75 indicated at the beginning of each staff. The music features a variety of rhythmic patterns, including eighth and sixteenth notes, and rests. The piece concludes with a double bar line at the end of the final staff.



# Canzon ottava: La Banchierina

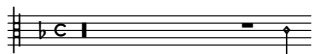
Alto

Adriano Banchieri (1568 - 1634)

Canzoni alla francese, 1596, Venice

1 ② 3 4

6  
15  
21  
29  
36  
44  
52  
59  
68  
75



# Canzon ottava: La Banchierina

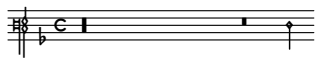
Tenore

Adriano Banchieri (1568 - 1634)

Canzoni alla francese, 1596, Venice

1 2 ③ 4





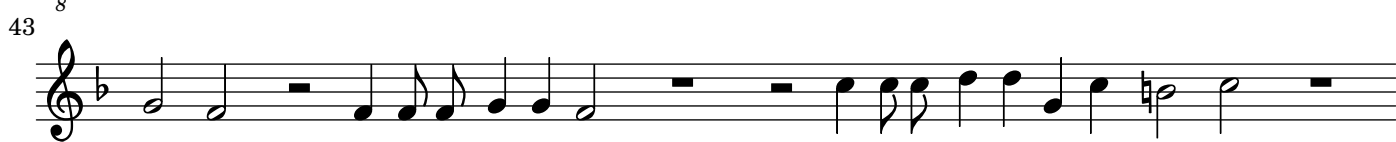
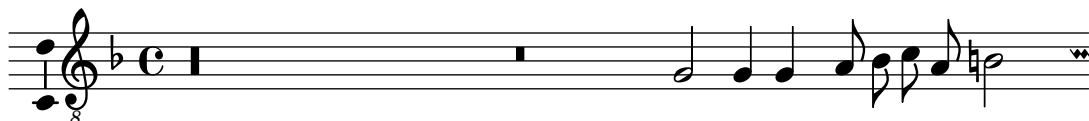
# Canzon ottava: La Banchierina

Basso

Adriano Banchieri (1568 - 1634)

Canzoni alla francese, 1596, Venice

1 2 3 ④



# Canzon ottava: La Banchierina

Adriano Banchieri (1568 - 1634)  
Canzoni alla francese, 1596, Venice

Canto

Alto

Tenore

Basso

7

13

19

25



Musical score system 1, measures 25-30. It consists of four staves. The first staff has a whole rest in measure 25, followed by eighth notes in measures 26-27, and quarter notes in measures 28-30. The second staff has a whole rest in measure 25, followed by eighth notes in measures 26-27, and quarter notes in measures 28-30. The third staff has quarter notes in measures 25-27, followed by quarter notes in measures 28-30. The fourth staff has a whole rest in measure 25, followed by quarter notes in measures 26-27, and quarter notes in measures 28-30.

31



Musical score system 2, measures 31-37. It consists of four staves. The first staff has quarter notes in measures 31-32, followed by quarter notes in measures 33-34, and quarter notes in measures 35-37. The second staff has quarter notes in measures 31-32, followed by quarter notes in measures 33-34, and quarter notes in measures 35-37. The third staff has quarter notes in measures 31-32, followed by quarter notes in measures 33-34, and quarter notes in measures 35-37. The fourth staff has quarter notes in measures 31-32, followed by quarter notes in measures 33-34, and quarter notes in measures 35-37.

38



Musical score system 3, measures 38-45. It consists of four staves. The first staff has quarter notes in measures 38-39, followed by quarter notes in measures 40-41, and quarter notes in measures 42-45. The second staff has quarter notes in measures 38-39, followed by quarter notes in measures 40-41, and quarter notes in measures 42-45. The third staff has quarter notes in measures 38-39, followed by quarter notes in measures 40-41, and quarter notes in measures 42-45. The fourth staff has quarter notes in measures 38-39, followed by quarter notes in measures 40-41, and quarter notes in measures 42-45.

46



Musical score system 4, measures 46-53. It consists of four staves. The first staff has quarter notes in measures 46-47, followed by quarter notes in measures 48-49, and quarter notes in measures 50-53. The second staff has quarter notes in measures 46-47, followed by quarter notes in measures 48-49, and quarter notes in measures 50-53. The third staff has quarter notes in measures 46-47, followed by quarter notes in measures 48-49, and quarter notes in measures 50-53. The fourth staff has quarter notes in measures 46-47, followed by quarter notes in measures 48-49, and quarter notes in measures 50-53.

55

System 1 (measures 55-62) features four staves. The top staff has a treble clef and a key signature of one flat. The second staff has a treble clef and a key signature of one flat. The third staff has a bass clef and a key signature of one flat. The fourth staff has a bass clef and a key signature of one flat. The music consists of various rhythmic patterns, including eighth and sixteenth notes, and rests.

63

System 2 (measures 63-69) features four staves. The top staff has a treble clef and a key signature of one flat. The second staff has a treble clef and a key signature of one flat. The third staff has a bass clef and a key signature of one flat. The fourth staff has a bass clef and a key signature of one flat. The music continues with complex rhythmic patterns, including eighth and sixteenth notes, and rests.

70

System 3 (measures 70-75) features four staves. The top staff has a treble clef and a key signature of one flat. The second staff has a treble clef and a key signature of one flat. The third staff has a bass clef and a key signature of one flat. The fourth staff has a bass clef and a key signature of one flat. The music continues with complex rhythmic patterns, including eighth and sixteenth notes, and rests.

76

System 4 (measures 76-82) features four staves. The top staff has a treble clef and a key signature of one flat. The second staff has a treble clef and a key signature of one flat. The third staff has a bass clef and a key signature of one flat. The fourth staff has a bass clef and a key signature of one flat. The music concludes with various rhythmic patterns, including eighth and sixteenth notes, and rests.