

In Crystal Towers

Cantus primus

Geoffrey Witney

William Byrd

① 2 3

In Crys- tal Towers, and tur- rets rich- ly set **A**

With glit- tering gems, With glit- tering gems, that shine

a- gainst the Sun, In reg- al rooms **B**

of Jas- per and of Jet, Con- tent of mind, Con- **C**

tent of mind, not al- ways likes to woon: not al-

ways likes to woon, to woon, Con- tent of **D**

mind, not al- ways likes to woon, to woon, But oft- en- times,

But oft- en- times, it pleas- eth her to stay, it

pleas- eth her to stay, it pleas- eth her to stay, it

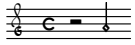
62 E

pleas- eth her to stay, In sim- ple cotes,

69 In sim- ple cotes en- closed with walls of clay, In

76 sim- ple cotes en- closed with walls of clay, with walls of

82 clay, en- closed with walls of clay, But oft- en- times clay.



In Crystal Towers

Cantus secundus

Geoffrey Witney

William Byrd

1 ② 3

A

In Crys- tal Towers, and tur- rets rich- ly set

8 With glit- tering gems, that shine a- gainst the Sun, a-

B

15 gainst the Sun, In reg- al rooms of Jas- per and of

C

24 Jet, and of Jet, Con- tent of mind, Con- tent of

32 mind, not al- ways likes to woon: not al- ways likes to


38 woon, likes to woon, Con- tent of mind, not al- ways likes to


D


44 woon, to woon, not al- ways likes to woon:


50 But oft- en- times, But oft- en- times, it pleas- eth


55 her to stay, it pleas- eth her to stay, it pleas- eth

62  **E**
her to stay, In sim- ple cotes en-

69  #
closed with walls of clay, with walls of clay,

74  #
In sim- ple cotes en- closed with walls of clay, In sim- ple cotes

79  #
en- closed with walls of clay, en- closed with walls of clay, en-

83  # 1. 2.
closed with walls of clay, But clay,



In Crystal Towers

From *Songs of sundrie natures* 1589

Geffrey Witney

Bassus

William Byrd

1 2 ③



In Crys- tal Towers, and tur- rets rich- ly set



With glit- tering gems, that shine a- gainst the Sun, In



reg- al rooms of Jas- per and of Jet, and of Jet,



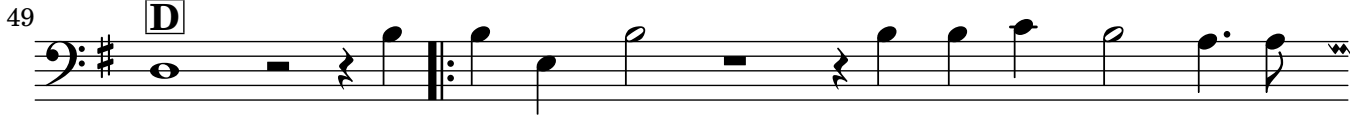
Con- tent of mind, Con- tent of mind, not al- ways, not al-



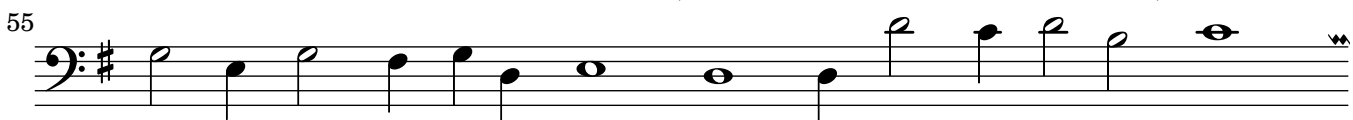
ways likes to woon, Con- tent of mind, not al- ways likes to



woon, to woon, to woon, not al- ways likes to



woon: But oft- en- times, But oft- en- times, oft- en-



times, it pleas- eth her to stay, it pleas- eth her to



stay, In sim- ple cotes en- closed with walls of

69
clay, In sim- ple cotes en- closed with walls of clay, of clay, of

75
clay, In sim- ple cotes, In sim- ple cotes en- closed with

81
walls, en- closed with walls of clay, of clay, But clay.

The image shows a musical score for a bass line in G major, spanning measures 69 to 81. The lyrics are: "clay, In simple cotes enclosed with walls of clay, of clay, of clay, In simple cotes, In simple cotes enclosed with walls, enclosed with walls of clay, of clay, But clay." The score includes a first ending and a second ending.

In Crystal Towers

From *Songs of sundrie natures* 1589

Geoffrey Witney

William Byrd

In Crys- tal Towers, and tur- rets rich- ly set With

In Crys- tal Towers, and tur- rets rich- ly set With

In Crys- tal Towers, and tur- rets rich- ly set

9
glit- tering gems, With glit- tering gems, that shine
glit- tering gems, that shine a- gainst the Sun, a-
With glit- tering gems, that shine a- gainst

15
a- gainst the Sun, In reg- al
gainst the Sun, In reg- al rooms of Jas- per
the Sun, In reg- al rooms of Jas-

22

rooms of Jas- per and of Jet, Con- tent of
 and of Jet, and of Jet, Con- tent of mind, Con-
 per and of Jet, and of Jet, Con- tent of

31

mind, Con- tent of mind, not al- ways likes to woon:
 tent of mind, not al- ways likes to woon: not al- ways likes to
 mind, Con- tent of mind, not al- ways, not al- ways likes to

38

not al- ways likes to woon, to woon,
 woon, likes to woon, Con- tent of mind, not
 woon, Con- tent of mind, not al- ways likes to

43

Con- tent of mind, not al- ways likes to woon, to
 al- ways likes to woon, to woon, not al- ways likes to
 woon, to woon, to woon, not al- ways likes to

49

woon, But oft- en- times, But oft- en- times, it pleas- eth
 woon: But oft- en- times, But oft- en- times,
 woon: But oft- en- times, But oft- en-

54

her to stay, it pleas- eth her to
 it pleas- eth her to stay, it pleas- eth her to
 times, oft- en- times, it pleas- eth her to stay,

59

stay, it pleas- eth her to stay, it pleas- eth her to stay, stay,

stay, it pleas- eth her to stay,

66

In sim- ple cotes, In sim- ple cotes en- closed with walls of clay,

In sim- ple cotes en- closed with walls of clay,

71

closed with walls of clay,

with walls of clay, In

sim- ple cotes en- closed with walls of clay, of clay, of

75

In sim- ple cotes en- closed with walls of
 sim- ple cotes en- closed with walls of clay, In sim- ple cotes

79

clay, In sim- ple cotes, In sim- ple
 clay, with walls of clay, en-
 en- closed with walls of clay, en- closed with walls of clay, en-

83

cotes en- closed with walls, en- closed with walls of
 closed with walls of clay, But oft- en- times clay.
 closed with walls of clay, But clay,
 clay, of clay, But clay.