

Altus



1. Cleare or cloud - ie sweet as A - prill showr - ing,
 2. Hir grace like June, when earth and trees bee trimde,
 3. Sweet som - mer spring that breath - eth life and grow - ing,



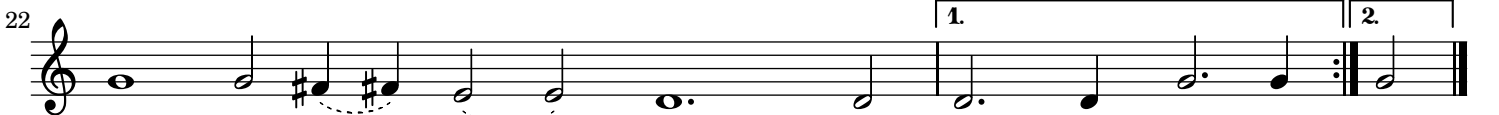
Smoth or frown - ing so is hir face to mee, Pleasd or smil - ing like
 In best at - tire of com - pleat beaut - ies height, Hir love a - gaine like
 In weedes as in - to hearbs and flow - ers And sees of ser - vice



milde May all flowr - ing, When skies blew silke and me - dowe's car - pets
 som - mers daies bee dimde, With lit - tle cloudes of doubt - full con - stant
 di - vers sorts in sow - ing, Some hap - ly seem - ing and some be - ing



bee, Hir speech - es notes of that night bird that sings, Who thought all
 faith, Hir trust hir doubt, like raine and heat in Skies, Gen - tly
 yours, Raine on your hearbs and flowrs that true - ly serve, And let your



sweet yet Jar - ring notes out - ring - eth. Hir speech - es eth.
 thundr - ing, she light - ning to mine eies. Hir trust hir eies.
 weeds lack dew and due - ly sterve. Raine on your sterve.