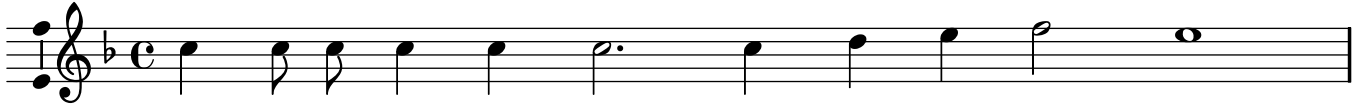




III. Daphne was not so chaste as she was changing,

Cantus

John Dowland



1. Daph- ne was not so chaste as she was chang- ing,
He that to day tri- umphs with fa- vors gra- ced,
2. Beau- tie can want no grace by true love view- ed,
Like to a fruit- full tree it e- ver grow- eth,



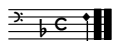
Soon be- gun Love with hate es- tran- ging: Yet
Fals be- fore night with scornes de- fa- ced:
Fan- cie by lookes is still re- nu- ed: But
Or the fresh- spring that end- lesse flow- eth.



is thy beau- tie fainde, and ev- rie one de- sires, Still the
if that beau- tie were of one con- sent with love, Love should



false light, the false light of thy trai- terous fires.
live free, should live free, and true plea- sure prove.



III. Daphne was not so chaste as she was changing,

Bassus

John Dowland



¹ Original has two g quarter notes before this note. These are not in the lute tablature, and cause the whole section to be the wrong length and sound terrible.