



8. The Marie-Golde.

CANTVS.

Antony Holborne

13

8. The Marie-Golde.

QUINTUS.

Antony Holborne

9

17

8. The Marie-Golde.

ALTUS.

Antony Holborne

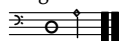
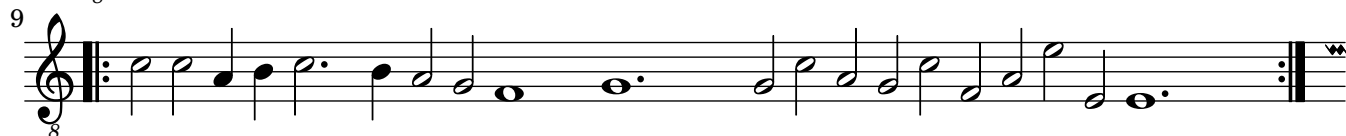
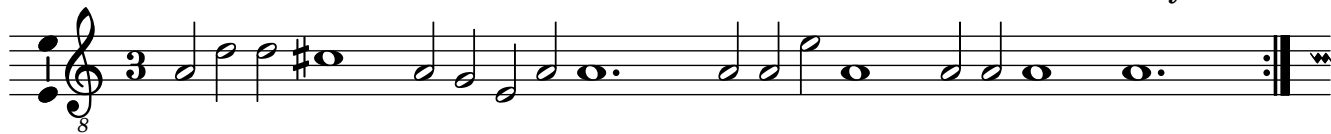
12



8. The Marie-Golde.

TENOR.

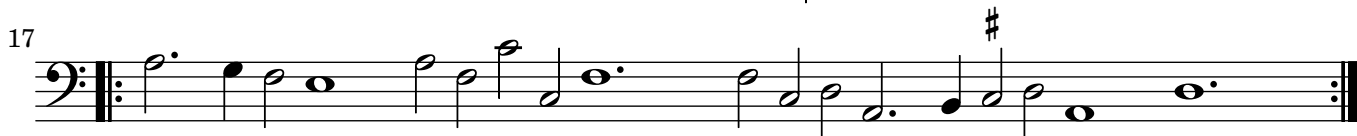
Antony Holborne



8. The Marie-Golde.

BASSVS.

Antony Holborne



8. The Marie-Golde.

Antony Holborne

The musical score for "The Marie-Golde" is presented in five systems. Each system consists of five staves: a soprano staff (treble clef), an alto staff (treble clef), a tenor staff (treble clef), a bass staff (bass clef), and a bass staff (bass clef). The music is in 3/4 time and the key signature has one sharp (F#). The notation includes various note values such as quarter, eighth, and sixteenth notes, as well as rests and accidentals. The piece concludes with a double bar line and repeat dots at the end of each system.