

# 17. Paradizo.

CANTVS.

Antony Holborne

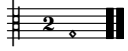
Musical score for the Cantus part of '17. Paradizo.' in common time. The score consists of four staves of music. The first staff begins with a treble clef and a common time signature. The music is written in a single melodic line. The score includes measure numbers 13, 23, and 31. The piece concludes with a double bar line and repeat dots.

# 17. Paradizo.

ALTUS.

Antony Holborne

Musical score for the Altus part of '17. Paradizo.' in common time. The score consists of four staves of music. The first staff begins with a treble clef and a common time signature. The music is written in a single melodic line. The score includes measure numbers 11, 22, and 31. The piece concludes with a double bar line and repeat dots.



# 17. Paradizo.

QUINTUS.

Antony Holborne

13

23

32

# 17. Paradizo.

TENOR.

Antony Holborne

11

22

32



# 17. Paradizo.

BASSVS.

Antony Holborne

15

28

# 17. Paradizo.

Antony Holborne

The image displays a musical score for the piece 'Paradizo' by Antony Holborne. The score is arranged in 14 staves, organized into four systems of four staves each. The first system (staves 1-4) is in common time (C) and features a treble clef on the first staff and a bass clef on the fourth. The second system (staves 5-8) is in cut time (C) and features a treble clef on the first staff and a bass clef on the fourth. The third system (staves 9-12) is in common time (C) and features a treble clef on the first staff and a bass clef on the fourth. The fourth system (staves 13-14) is in common time (C) and features a treble clef on the first staff and a bass clef on the fourth. The music is written in a style characteristic of the 16th-century lute or keyboard repertoire, with a focus on rhythmic patterns and melodic lines. The notation includes various note values, rests, and repeat signs.

A musical score consisting of five staves. The first four staves are in treble clef, and the fifth staff is in bass clef. The music is written in a key with one flat (B-flat) and a common time signature. The score includes various rhythmic values such as quarter, eighth, and sixteenth notes, as well as rests and accidentals. The piece concludes with a double bar line and repeat dots on each staff.