

# 35. Decrevi.

CANTVS.

Antony Holborne

Musical score for the Cantus part of '35. Decrevi.' by Antony Holborne. The score is written in treble clef with a common time signature. It consists of five staves of music. The first staff begins with a treble clef, a common time signature, and a key signature of one sharp (F#). The music is primarily composed of quarter and eighth notes. Measure numbers 11, 22, 34, and 45 are indicated on the left side of the staves. The score concludes with a double bar line and repeat dots.

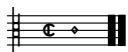
# 35. Decrevi.

ALTUS.

Antony Holborne

Musical score for the Altus part of '35. Decrevi.' by Antony Holborne. The score is written in treble clef with a common time signature. It consists of five staves of music. The first staff begins with a treble clef, a common time signature, and a key signature of one sharp (F#). The music is primarily composed of quarter and eighth notes. Measure numbers 9, 20, 33, and 45 are indicated on the left side of the staves. A first ending bracket labeled '(1)' is placed above the final measure of the fifth staff. The score concludes with a double bar line and repeat dots.

<sup>2</sup>Half note in facsimile.

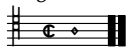


### 35. Decrevi.

QUINTUS.

Antony Holborne

Musical score for Quintus part of '35. Decrevi.' in common time. The score consists of five staves of music. The first staff begins with a common time signature and a double bar line. The second staff starts at measure 12, the third at 23, the fourth at 35, and the fifth at 45. The music features a mix of eighth and sixteenth notes, with some rests and accidentals (sharps and flats). The piece concludes with a double bar line and repeat dots.

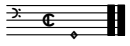


### 35. Decrevi.

TENOR.

Antony Holborne

Musical score for Tenor part of '35. Decrevi.' in common time. The score consists of five staves of music. The first staff begins with a common time signature and a double bar line. The second staff starts at measure 12, the third at 23, the fourth at 35, and the fifth at 45. The music features a mix of eighth and sixteenth notes, with some rests and accidentals (sharps and flats). The piece concludes with a double bar line and repeat dots.



# 35. Decrevi.

BASSVS.

Antony Holborne

17

35

# 35. Decrevi.

Antony Holborne

The image displays a musical score for the piece "35. Decrevi." by Antony Holborne. The score is organized into five systems, each consisting of five staves. The first system includes a treble clef with a key signature of one sharp (F#) and a common time signature (C). The notation is primarily composed of quarter and eighth notes, with some rests and accidentals. The second system features repeat signs (double bar lines with dots) at the end of several staves, indicating repeated rhythmic or melodic patterns. The third system continues the melodic and harmonic development. The fourth system shows further rhythmic complexity with some sixteenth notes. The fifth system concludes the piece with a final cadence. The overall style is characteristic of the English lute or keyboard repertoire of the late 16th century.

The image displays a musical score for a piece, organized into five systems of staves. Each system consists of five staves: four treble clefs and one bass clef. The notation includes various note values (quarter, eighth, and sixteenth notes), rests, and accidentals (sharps, flats, and naturals). The score is divided into sections by double bar lines with repeat dots. The first system features a key signature of one flat (B-flat). The second system introduces a key signature change to one sharp (F#). The third system continues with the one sharp key signature. The fourth system includes a first ending bracket labeled '(1)'. The fifth system concludes the piece with a final double bar line and repeat dots. The bass line provides a steady accompaniment throughout the piece.