



# 43. Amoretta.

CANTVS.

Antony Holborne

Musical score for the Cantus part of '43. Amoretta.' in common time. The score consists of six staves of music. The first staff begins with a treble clef and a common time signature. The key signature is one sharp (F#). The music features a variety of note values including quarter, eighth, and sixteenth notes, as well as rests. There are repeat signs and trill ornaments throughout the piece. Measure numbers 7, 17, 26, 34, and 42 are indicated on the left side of the staves.

# 43. Amoretta.

ALTUS.

Antony Holborne

Musical score for the Altus part of '43. Amoretta.' in common time. The score consists of five staves of music. The first staff begins with a treble clef and a common time signature. The key signature is one sharp (F#). The music features a variety of note values including quarter, eighth, and sixteenth notes, as well as rests. There are repeat signs and trill ornaments throughout the piece. Measure numbers 11, 20, 30, and 41 are indicated on the left side of the staves.



# 43. Amoretta.

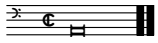
QUINTUS.

Antony Holborne

# 43. Amoretta.

TENOR.

Antony Holborne



# 43. Amoretta.

BASSVS.

Antony Holborne

15

28

38

# 43. Amoretta.

Antony Holborne

The musical score for 'Amoretta' is presented in five systems, each consisting of five staves. The notation is in common time (C) and features a key signature of one sharp (F#). The score includes a variety of rhythmic values such as quarter, eighth, and sixteenth notes, as well as rests. The first system begins with a treble clef and a common time signature. The second system introduces a bass clef. The third system continues with a treble clef. The fourth system includes a double bar line with repeat dots. The fifth system concludes with a final double bar line and repeat dots. The notation is clear and legible, with standard musical symbols and accidentals.

The image displays a page of musical notation for a string quartet, organized into four systems. Each system consists of two treble clef staves and two bass clef staves. The notation includes various note values, rests, and repeat signs. The first system shows a melodic line in the upper staves and a supporting bass line. The second system features a repeat sign in the first measure of each staff, followed by a continuation of the melody. The third system continues the melodic and bass lines. The fourth system concludes the page with a final cadence in all parts.

A musical score consisting of five staves. The top four staves are in treble clef, and the bottom staff is in bass clef. The music is written in a key with one sharp (F#) and a common time signature. The notation includes various note values such as quarter, eighth, and half notes, as well as rests and accidentals. The score concludes with a double bar line and repeat dots on each staff.