

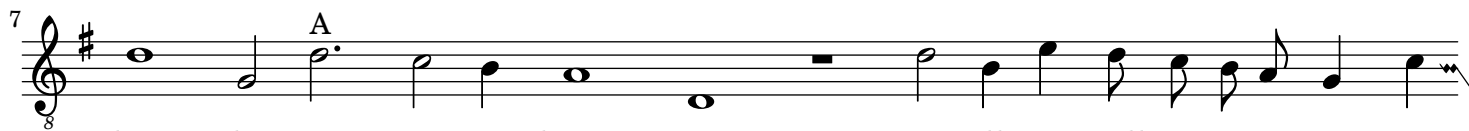
III. Cruel, you pul away too soone

Bassus

Thomas Morley



Cru- el, you pul a- way to soone your sweet lips, your dain- tie



lips when as you kisse mee; cru- ell, you pull aw- ay to soone your



sweet lips, your dain- tie lips when as you kisse me: But you should hould them



still, should hold them still, but you should, hould them still, should hould them still, and



then should you blisse mee; Now or eare I tast them, strait a- way they hast them,



strayt a- way they hast, they hast them; But you per- haps



re- tire them; to move my thoughts ther- by the more to fyre




them, A- las, a- las such bayts, a- las such baytes you





need to fynd out ne- ver: if you would but let mee, if you would but let mee, if




you would but let mee, if you would let mee, if you would let mee, I would kisse

63  F
 you, would kisse you ev- er. A- las, a- las such bayts, a- las such

72  G
 bayts you need to finde out ne- ver; if you would but let me, if you would but let

78 
 me, if you would but let mee, if you would let mee, if you would let me,

84 
 if you would but let mee, I would kisse, and kisse you, kisse you ev- er.