

# VI. God morrow, Fayre Ladies,

## CANTVS

Thomas Morley

God morrow, faire Ladies of the May, wher is my cru - ell? where is

7 my sweet cru - ell? God mor-row, faire Ladies, of the May, wher

13 is my sweet cre-wel? faire Clo - ris my sweet crew - ell? O

20 see where shee comes a Queene, a Queene, a Queene, shee comes, a

26 Queene, all in greene, all in gau-die greene a - ray - ing, all in

32 gau-dy greene a-ray-ing, all in greene, a - ray - ing. O how

38 gay - ly goes my sweet je - well? was never such a May - ing, ne-

46 ver was such a May - ing, such a May-ing, since May de-

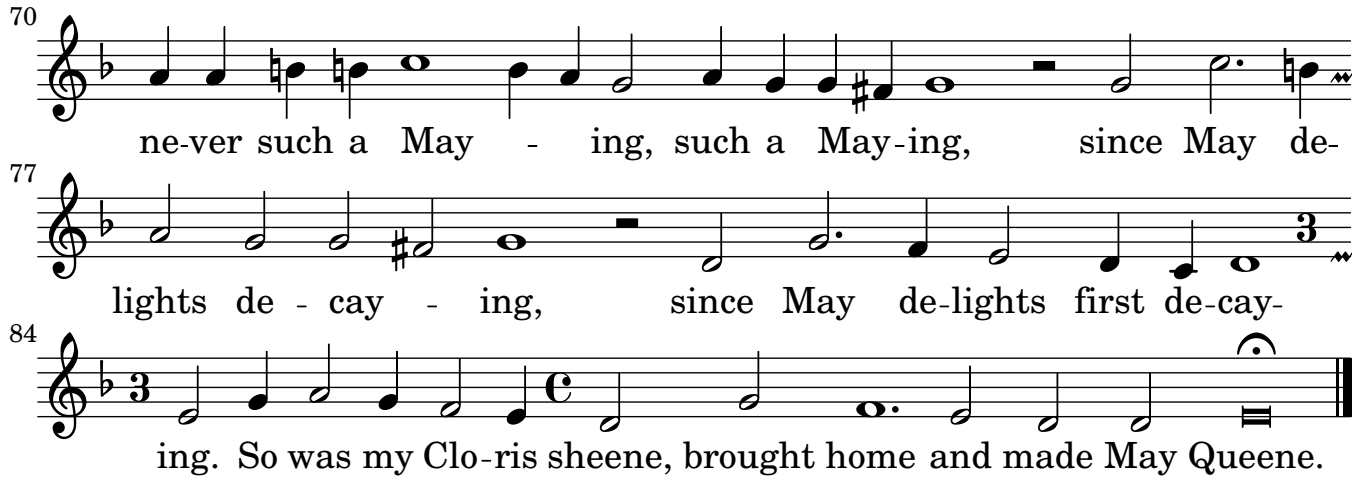
53 lights de - cay - ing, since May delights first decay - ing. O how

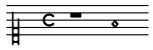
62 gay - ly goes my sweet jew - ell? was never such a May - ing, was

70  
ne-ver such a May - ing, such a May-ing, since May de-

77  
lights de - cay - ing, since May de-lights first de-cay-

84  
ing. So was my Clo-ris sheene, brought home and made May Queene.





# VI. God morrow, Fayre Ladies,

ALTUS.

Thomas Morley

God mor-row, faire La-dies of the May, wher is my  
6 cru - ell? where is my sweet cru - ell? God mor - row, faire  
10 La-dies, of the May, faire La-dies, say, wher is my sweet cre -  
14 wel? faire Clo-ris my sweet crew - ell? See o where shee comes a  
22 (1)  
28 Queene, a Queene, oh a Queene, a Queene, a Queene, all in  
34 B gau-die greene, a - ray - ing, in gau-dy greene a - ray -  
42 ing, all in gau - die greene, O how gay - ly goes my sweet bonny je -  
47 well? Was ne-ver such a May, such a May, such a May-ing, was ne-ver  
such a May-ing, ne-ver was such a May-ing, since May delights first

53 C

de - cay - ing. since May de-lights first de-cay - ing.

61

O how gay - ly goes my sweet bon-ny je - well? Was

67

ne-ver such a May, such a May, such a may-ing, was ne-ver such a May-

72

ing, ne-ver was such a May-ing, since May de-lights first

77

de - cay - ing, since May de-lights first de - cay

84

ing. So was my Clo-ris sheene, brought home for the May Queene.

<sup>1</sup> facsimile has a dotted whole.



## VI. God morrow, Fayre Ladies,

BASSVS.

Thomas Morley

God mor-row, fayre Ladies of the May, wher is my cru-ell?

9  
God morrow, fayre Ladies, of the May, say, wher is my sweet sweet cru-el, faire

15  
A  
Clo - ris my sweet cru - ell? See lo wher shee comes a Queene, a Queene,

26  
she comes, all in greene, all in greene a - ray - ing, in gaudie greene a-

35  
B  
ray - ing. How gay - ly goes my je - well? Was ne ver such a

45  
May - ing, was never such a May, such a Maying, since May delights first

53  
C  
de - cay - ing, since Mayes first de - cay - ing; How gay - ly goes my

65  
je - ell? was ne-ver such a May - ing, was ne-ver such a May,

73  
such a May-ing, since May de-lights first de - cay - ing, since May first de-

82  
cay - ing. So was my Clo-ris sheene, brought home for the May Queene.

# VI. God morrow, Fayre Ladies,

Thomas Morley

God mor-row, faire La-dies of the May, wher is my cru -

God mor - row, faire La-dies of the May, wher is my

God mor-row, fayre

ell? where is my sweet cru - ell? God

cru - ell? where is my sweet cru-ell? God mor-row, faire La-dies, of the May, faire

La-dies of the May, wher is my cru - ell? God mor - row, fayre

mor - row, faire Ladies, of the May, wher is my sweet cre-wel? faire Clo - ris my

La - dies, say, wher is my sweet cre - wel? faire Clo - ris my

Ladies, of the May, say, wher is my sweet sweet cru - el, faire Clo - ris my sweet

sweet crew - ell? O see where shee comes a Queene, a Queene, a

sweet crew ell? See o where shee comes a Queene, a Queene, oh

cru - - ell? See lo wher shee comes a

Queene, shee comes, a Queene, all in greene, all in gau-die greene a - ray -  
 a Queene, a Queene, a Queene, all in gau-die greene, a - ray -  
 Queene, a Queene, shee comes, all in greene, all in greene a - ray -  
 ing, all in gau-dy greene a-ray-ing, all in greene, a - ray - ing. O how gay - ly  
 ing, in gau-dy greene a - ray - ing, all in gau - die greene, O how  
 ing, in gau - die greene a - ray - ing. How gay -  
 goes my sweet je - well? was ne-ver such a May - ing, ne-  
 gay - ly goes my sweet bonny je-well? Was ne-ver such a May, such a May, such a May -  
 ly goes my je - well? Was ne ver such a May -  
 ver was such a May - ing, such a May - ing, since May de-  
 ing, was ne-ver such a May - ing, ne-ver was such a May-ing, since May de-lights first  
 - ing, was ne-ver such a May, such a May - ing, since May de-lights first

lights de - cay - ing, since May de-lights first de-cay - ing. O how  
de - cay - ing. since May de-lights first de - cay - ing. O  
de - cay - ing, since Mayes first de - cay - - ing; How  
gay - ly goes my sweet jew - ell? was ne-ver such a May - - -  
how gay - ly goes my sweet bon-ny je-well? Was ne-ver such a May, such a May,  
gay - ly goes my je - ell? was ne-ver such a  
ing, was ne - ver such a May - - ing, such a May - ing, since  
such a may - ing, was ne-ver such a May - ing, ne-ver was such a May-ing, since May de-  
May - - - ing, was ne-ver such a May, such a May - ing, since May de-  
May de-lights de - cay - ing, since May de-lights first de-cay -  
lights first de - cay - ing, since May de-lights first de - cay  
lights first de - cay - ing, since May first de - cay - -



ing. So was my Clo - ris sheene, brought home and made May Queene.

ing. So was my Clo - ris sheene, brought home for the May Queene.

ing. So was my Clo - ris sheene, brought home for the May Queene.