

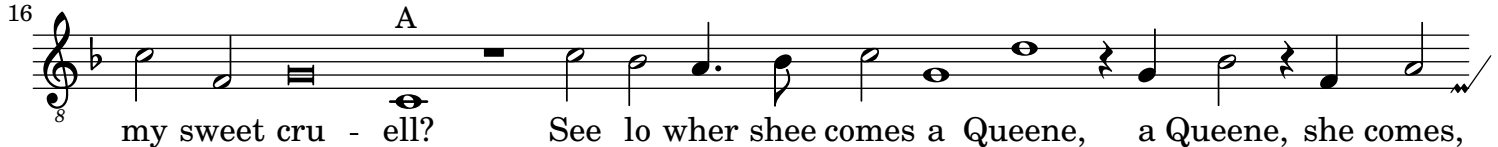
BASSVS.



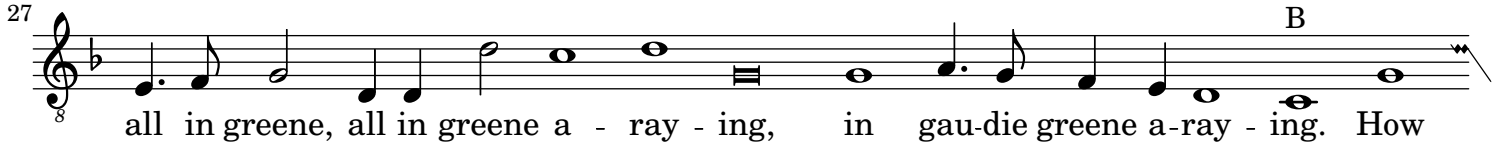
God mor-row, fayre Ladies of the May, wher is my cru-ell?



God morrow, fayre Ladies, of the May, say, wher is my sweet sweet cru-el, faire Clo - ris



my sweet cru - ell? See lo wher shee comes a Queene, a Queene, she comes,



all in greene, all in greene a - ray - ing, in gau-die greene a-ray - ing. How



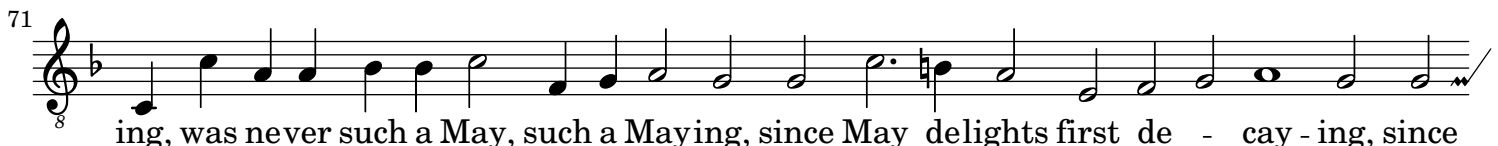
gay - ly goes my je - well? Was ne ver such a May - ing, was ne-ver



such a May, such a Maying, since May delights first de - cay - ing, since Mayes first de-



cay - ing; How gay - ly goes my je - ell? was never such a May -



ing, was never such a May, such a Maying, since May delights first de - cay - ing, since



May first de-cay - ing. So was my Clo-ris sheene, brought home for the May Queene.