



# Good morrow, fair ladies of the May, (transposed)

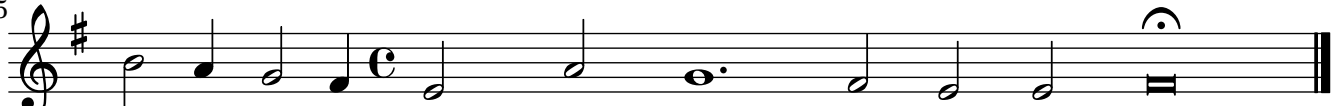
CANTUS

Thomas Morley

God morrow, faire Ladies of the May, wher is my cru - ell? where is  
7 my sweet cru - ell? God morrow, faire Ladies, of the May, wher  
13 is my sweet cre-wel? faire Clo - ris my sweet crew - ell? O  
20 see where shee comes a Queene, a Queene, a Queene, shee comes, a  
26 Queene, all in greene, all in gaudie greene a - ray - ing, all in  
32 gau-dy greene a - ray-ing, all in greene, a - ray - ing. O how  
38 gay - ly goes my sweet je - well? was never such a May - ing, ne-  
46 ver was such a May - ing, such a May - ing, since May de-  
53 lights de - cay - ing, since May delights first de - cay - ing. O how  
62 gay - ly goes my sweet jew - ell? was never such a May - ing, was

70  

 never such a May - ing, such a May - ing, since May de-

77  

 lights de - cay - ing, since May delights first de - cay - ing. So

85  

 was my Clo-ris sheene, brought home and made May Queene.



# Good morrow, fair ladies of the May, (transposed)

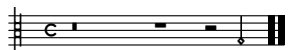
ALTUS.

Thomas Morley

God mor-row, faire Ladies of the May, wher is my  
6  
cruell? where is my sweet cruell? God morrow, faire Ladies, of the May, faire  
11  
Ladies, say, wher is my sweet cre - wel? faire Clo - ris my sweet crew -  
19  
ell? See o where shee comes a Queene, a Queene, oh a Queene, a  
26  
Queene, a Queene, all in gau-die greene, a - ray - - ing, in  
32  
gau-dy greene a - ray - ing, all in gau - die greene, O how  
39  
gay - ly goes my sweet bon-ny je - well? Was ne-ver such a  
44  
May, such a May, such a May-ing, was never such a May-ing, never was  
49  
such a Maying, since May delights first de - cay - - ing. since May de-

57 G  
lights first de-cay - ing. O how gay-ly goes my sweet bonny je-  
66  
well? Was ne-ver such a May, such a May, such a may-ing, was ne-ver  
71  
such a May-ing, ne-ver was such a May-ing, since May de-lights first  
77  
de - cay - ing, since May de-lights first de-cay ing. So  
85  
was my Clo-ris sheene, brought home for the May Queene.

<sup>1</sup>facsimile has a dotted whole note.



# Good morrow, fair ladies of the May, (transposed)

BASSVS.

Thomas Morley

8 God mor-row, fayre Ladies of the May, wher

7 is my cru - ell? God morrow, fayre Ladies, of the May, say, wher is my

13 sweet sweet cru - el, faire Clo-ris my sweet cru - ell? See lo

22 wher shee comes a Queene, a Queene, she comes, all in greene,

28 all in greene a - ray - ing, in gau-die greene a - ray -

36 F ing. How gay - ly goes my je - well? Was ne ver such a

45 May - ing, was never such a May, such a May-ing, since May de-

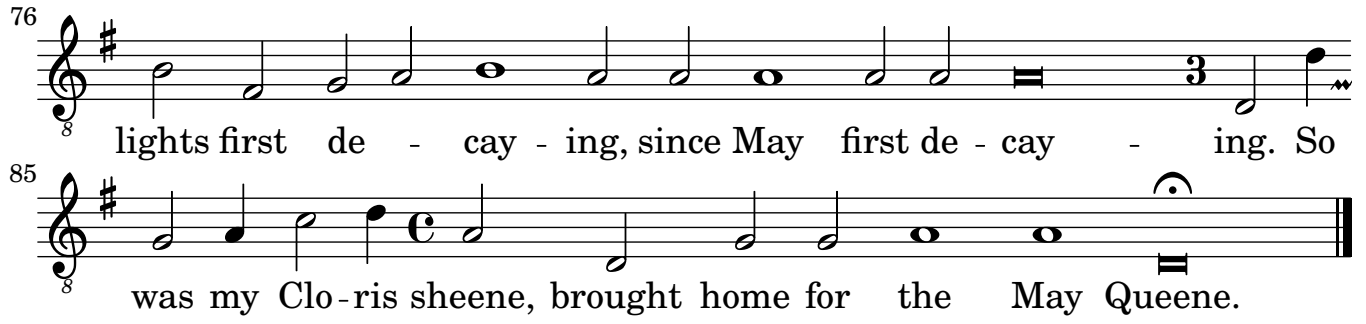
52 G lights first de - cay - ing, since Mayes first de - cay - ing;

61 How gay - ly goes my je - ell? was ne-ver such a

69 May - ing, was never such a May, such a May-ing, since May de-

76  
lights first de - cay - ing, since May first de - cay - ing. So

85  
was my Clo-ris sheene, brought home for the May Queene.



# Good morrow, fair ladies of the May, (transposed)

Thomas Morley

God mor-row, faire La-dies of the May, wher is my cru - -

God mor - row, faire La-dies of the May, wher is my

God mor - row, fayre

ell? where is my sweet cru - ell? God

cru - ell? where is my sweet cru-ell? God mor-row, faire La-dies, of the May, faire

La-dies of the May, wher is my cru - ell? God mor - row, fayre

mor - row, faire Ladies, of the May, wher is my sweet cre-wel? faire Clo - ris my

La - dies, say, wher is my sweet cre - wel? faire Clo - ris my

Ladies, of the May, say, wher is my sweet sweet cru - el, faire Clo - ris my sweet

sweet crew - ell? O see where shee comes a Queene, a Queene, a

sweet crew ell? See o where shee comes a Queene, a Queene, oh

cru - - ell? See lo wher shee comes a

Queene, shee comes, a Queene, all in greene, all in gaudie greene a - ray - -  
 a Queene, a Queene, a Queene, all in gaudie greene, a - ray - -  
 Queene, a Queene, she comes, all in greene, all in greene a - ray -  
 ing, all in gaudy greene a - raying, all in greene, a - ray - ing. O how gay - ly goes my  
 ing, in gaudy greene a - ray - ing, all in gau - die greene, O how gay - ly  
 ing, in gau - die greene a - ray - ing. How gay - ly  
 sweet je - well? was never such a May - - ing, ne-ver was such a  
 goes my sweet bonny je - well? Was ne-ver such a May, such a May, such a May - ing, was ne-ver  
 goes my je - well? Was ne ver such a May - - -  
 May - - ing, such a May - ing, since May de-lights de - cay -  
 such a May - ing, ne-ver was such a May-ing, since May de-lights first de - cay -  
 ing, was never such a May, such a May - ing, since May de-lights first de - cay -



ing, since May delights first de - cay - ing. O how gay - ly goes my sweet

ing. since May delights first de - cay - ing. O how gay - ly goes my sweet

ing, since Mayes first de - cay - - ing; How gay - ly goes my

je - ell? was never such a May - - ing, was ne - ver such a May -

bonny je - well? Was ne - ver such a May, such a May, such a may - ing, was ne - ver such a May -

je - ell? was never such a May - - - ing, was never

- ing, such a May - ing, since May delights de - cay - ing, since May de -

ing, ne - ver was such a Maying, since May delights first de - cay - ing, since May delights first

such a May, such a May - ing, since May delights first de - cay - ing, since May first de -

lights first de - cay - ing. So was my Clo - ris sheene, brought home and made May Queene.

de - cay ing. So was my Clo - ris sheene, brought home for the May Queene.

cay - - ing. So was my Clo - ris sheene, brought home for the May Queene.