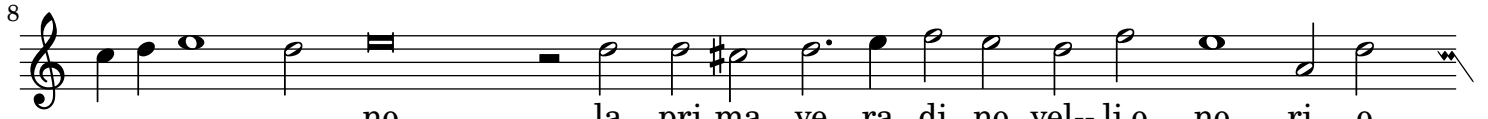


Superius

Part I

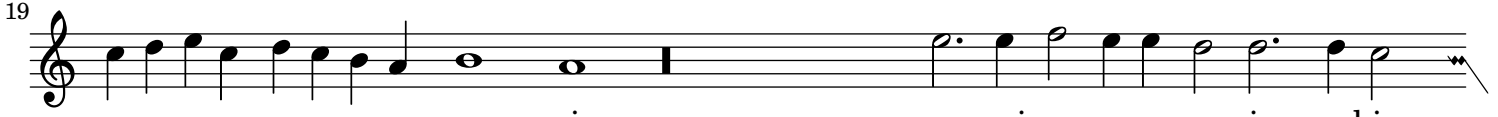


Ve - sti - va i col - li e le cam - pag - ne in - tor - no, in - tor -



no la pri - ma - ve - ra di no - vel - li o - no - ri, o -

A



no - ri, e spi - ra - va so - a - vi a - rabi o -



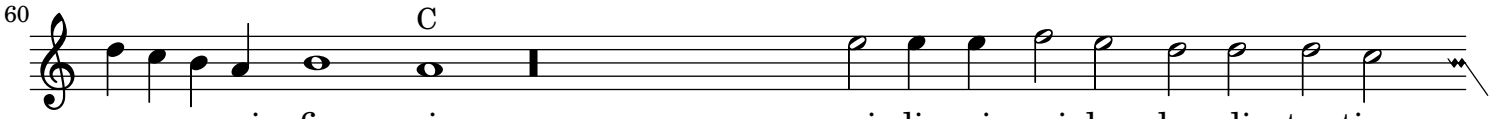
do - ri, cin - ta d'er - be, e di fron - de il crin a - dor -



no, quando Li - co - ri, a l'apparir del gior - no, del gior -



no, co - glien - do di sua man pur - pu - rei fio - ri, pur - pu -



- rei fio - ri, mi dis - so in gui - dar - don di tan - ti ar -



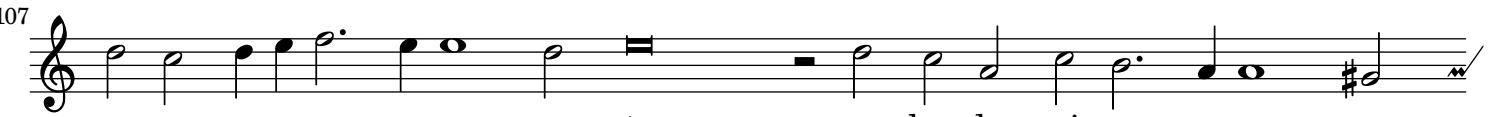
do - ri: A te li col - go ed ec - co, io te n'a - dor - no,



A te li col - go ed ec - co, io te n'a - dor - no.



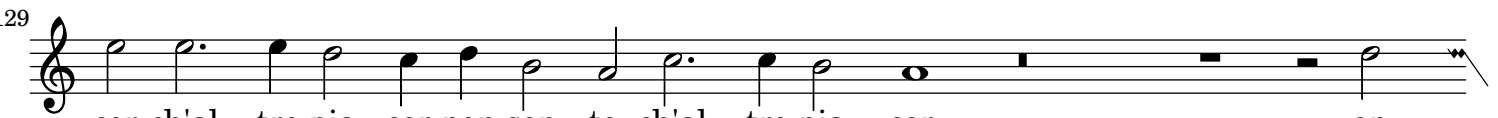
Co - sì le chiome mie, so - a - ve - men - te, so -



a - ve - men - te par - lan - do, cin -



se e in sì dol - ci le - ga - mi mi strin - se il cor, mi strin - se il

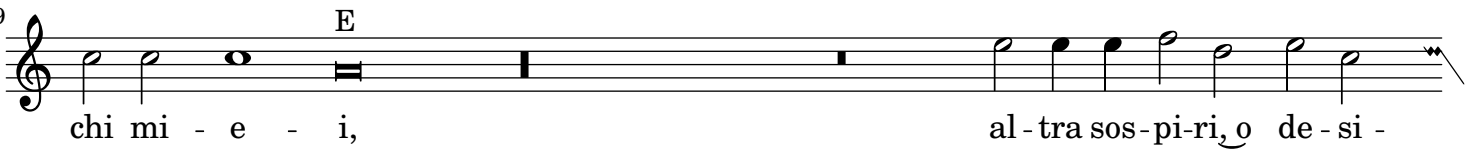


cor ch'al - tro pia - cer non sen - te, ch'al - tro pia - cer. on -

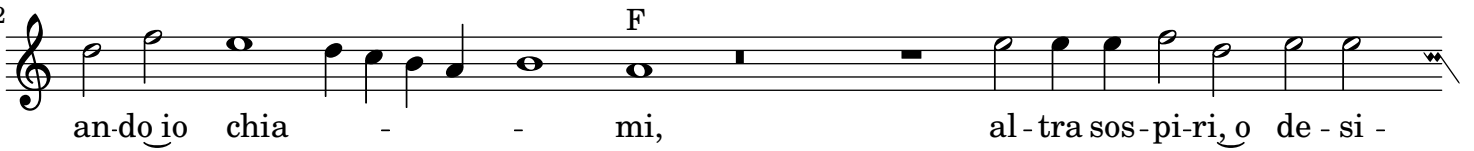
139



149



162



173

