

Pavans,
Galliards and Almains,
to be played on May 4
at the Walk for Hunger.

*Made by Antony Holborne Gentleman and
Servant to her most excellent
Majestie.*

Edited by Laura Conrad

Imprinted in London in 1599
this edition April 16, 2014



Contents

Contents	1	63. The fairie-round.	6
58. The fruit of love.	2	55. The night watch.	8
22. Galliard.	4		



58. The fruit of love.

CANTUS.

Antony Holborne

58. The fruit of love.

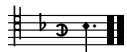
ALTUS.

Antony Holborne

58. The fruit of love.

QUINTUS.

Antony Holborne

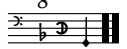


58. The fruit of love.

TENOR.

Antony Holborne

8
14
33

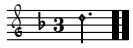


58. The fruit of love.

BASSVS.

Antony Holborne

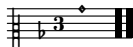
15
31



22. Galliard

CANTUS.

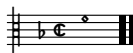
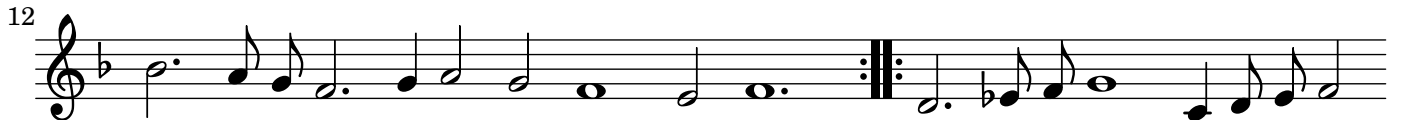
Antony Holborne



22. Galliard

ALTUS.

Antony Holborne

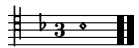


22. Galliard

QUINTUS.

Antony Holborne

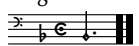




22. Galliard

TENOR.

Antony Holborne



22. Galliard

BASSVS.

Antony Holborne

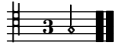


63. The Fairie-round.

CANTUS.

Antony Holborne

Musical score for the Cantus part of 'The Fairie-round'. It consists of four staves of music in 3/4 time with a key signature of one sharp (F#). The first staff begins at measure 1. The second staff starts at measure 7 and includes a repeat sign. The third staff starts at measure 13 and also includes a repeat sign. The fourth staff starts at measure 20 and concludes with a double bar line.

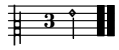


63. The Fairie-round.

TENOR.

Antony Holborne

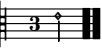
Musical score for the Tenor part of 'The Fairie-round'. It consists of four staves of music in 3/4 time with a key signature of one sharp (F#). The first staff begins at measure 1. The second staff starts at measure 6 and includes a repeat sign. The third staff starts at measure 12 and includes a repeat sign. The fourth staff starts at measure 18 and concludes with a double bar line.



63. The Fairie-round.

ALTUS.

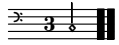
Antony Holborne



63. The Fairie-round.

QUINTUS.

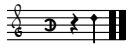
Antony Holborne



63. The Fairie-round.

BASSVS.

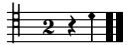
Antony Holborne



55. The night watch.

CANTVS.

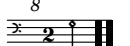
Antony Holborne



55. The night watch.

TENOR.

Antony Holborne

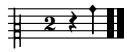


55. The night watch.

BASSVS.

Antony Holborne



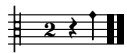


55. The night watch.

ALTUS.

Antony Holborne

Musical score for the Altus part of 'The night watch'. The score is written in treble clef with a key signature of one sharp (F#) and a time signature of 2/4. It consists of five staves of music. The first staff begins with a treble clef, a key signature of one sharp, and a time signature of 2/4. The second staff is marked with a first ending bracket labeled '1. (1)' and a second ending bracket labeled '2.'. The third staff is marked with a first ending bracket labeled '1.' and a second ending bracket labeled '2. (1)'. The fourth staff is marked with a first ending bracket labeled '1.', a second ending bracket labeled '2. (1)', and the word 'Final.' at the end. The fifth staff is marked with a first ending bracket labeled '1.', a second ending bracket labeled '2. (1)', and the word 'Final.' at the end.



55. The night watch.

QUINTUS.

Antony Holborne

Musical score for the Quintus part of 'The night watch'. The score is written in treble clef with a key signature of one sharp (F#) and a time signature of 2/4. It consists of four staves of music. The first staff begins with a treble clef, a key signature of one sharp, and a time signature of 2/4. The second staff is marked with a first ending bracket labeled '1. (1)' and a second ending bracket labeled '2.'. The third staff is marked with a first ending bracket labeled '1.' and a second ending bracket labeled '2. (1)'. The fourth staff is marked with a first ending bracket labeled '1.', a second ending bracket labeled '2. (1)', and the word 'Final.' at the end.

¹ Alternative endings are editorial.

² facsimile has a dotted whole note.

Serpent Publications
233 Broadway
Cambridge, MA 02139
USA
(617) 661-8097
<http://www.SerpentPublications.org/>

