

# Tota pulchra es

Ad pares.

Discantus

(loosely) Song of Solomon, 4:7

Sixtus Dietrich

from Rhau, Tricinia, 1542, VII.

① 2 3

To - ta pul - chra  
 es, To - ta pul - - - chra es a -  
 mi - ca me - - - a a - mi - ca me - a, me -  
 - - a Et ma - cu - la non est, in  
 te, et ma - cu - la non est in te,  
 non est in te, non est in te, for -  
 mo - sa me - - - a di - le -  
 - cta me - a co - lum - ba me - - - a.

Translation:

Tota pulchra es amica mea  
 Et macula non est in te  
 formosa mea  
 dilecta mea  
 columba mea.

You are altogether beautiful, my love;  
 there is no flaw in you  
 my beauty,  
 my delight,  
 my dove.

Loosely taken from the Song of Solomon 4:7.

Translation:

Tota pulchra es amica mea  
Et macula non est in te  
formosa mea  
dilecta mea  
columba mea.

You are altogether beautiful, my love;  
there is no flaw in you  
my beauty,  
my delight,  
my dove.

Loosely taken from the Song of Solomon 4:7.

Translation:

Tota pulchra es amica mea  
Et macula non est in te  
formosa mea  
dilecta mea  
columba mea.

You are altogether beautiful, my love;  
there is no flaw in you  
my beauty,  
my delight,  
my dove.

Loosely taken from the Song of Solomon 4:7.



# Tota pulchra es

Ad pares.

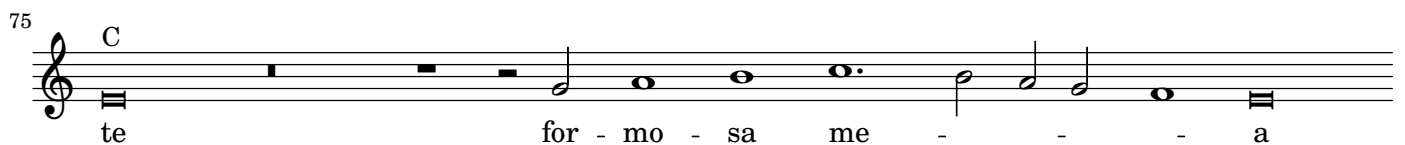
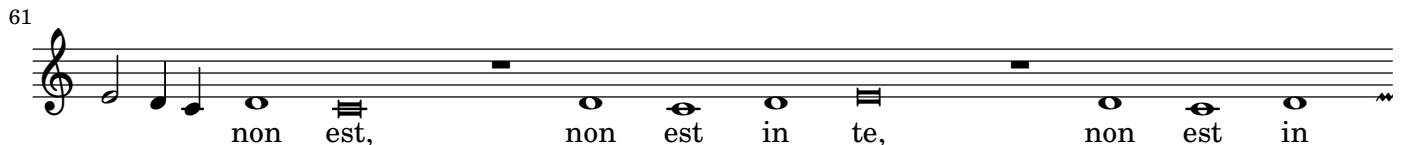
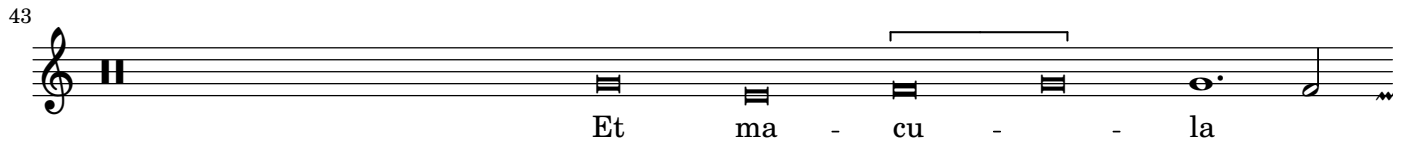
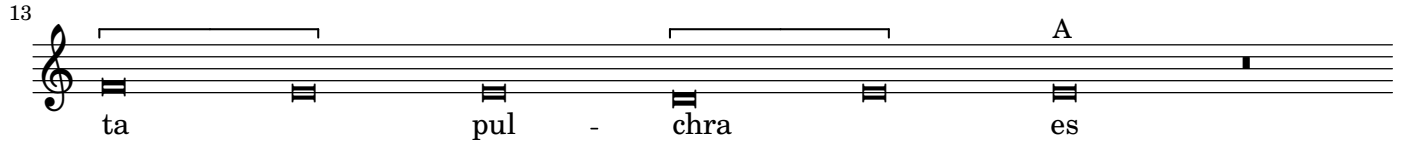
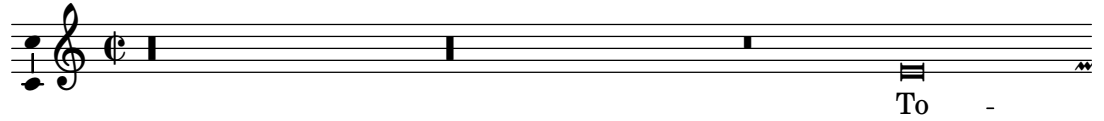
(loosely) Song of Solomon, 4:7

Tenor

Sixtus Dietrich

from Rhau, Tricinia, 1542, VII.

1 ② 3



” Translation:

Tota pulchra es amica mea  
Et macula non est in te  
formosa mea  
dilecta mea  
columba mea.

You are altogether beautiful, my love;  
there is no flaw in you  
my beauty,  
my delight,  
my dove.

Loosely taken from the Song of Solomon 4:7.

Translation:

<sup>1</sup>Tied note is editorial.

<sup>2</sup>Original has a b here, but it's an awful crunch with the a in the discantus. The f in the bassus supports having c or a here.

Tota pulchra es amica mea  
Et macula non est in te  
formosa mea  
dilecta mea  
columba mea.

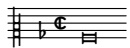
You are altogether beautiful, my love;  
there is no flaw in you  
my beauty,  
my delight,  
my dove.

Loosely taken from the Song of Solomon 4:7.  
Translation:

Tota pulchra es amica mea  
Et macula non est in te  
formosa mea  
dilecta mea  
columba mea.

You are altogether beautiful, my love;  
there is no flaw in you  
my beauty,  
my delight,  
my dove.

Loosely taken from the Song of Solomon 4:7.



# Tota pulchra es

Ad pares.

Bassus

(loosely) Song of Solomon, 4:7

Sixtus Dietrich

from Rhau, Tricinia, 1542, VII.

1 2 ③

To - ta pul - - - chra

es a - mi - ca me -

- - - a a - mi - ca me - -

- a Et ma - cu - la non est, in

te, non est in te

non est in te et ma - cu - la non est in te for -

mo - sa me - - - a di - le - cta me -

- a co - lum - ba me - - - a.

Translation:

Tota pulchra es amica mea  
 Et macula non est in te  
 formosa mea  
 dilecta mea  
 columba mea.

You are altogether beautiful, my love;  
 there is no flaw in you  
 my beauty,  
 my delight,  
 my dove.

Loosely taken from the Song of Solomon 4:7.

Translation:

Tota pulchra es amica mea  
Et macula non est in te  
formosa mea  
dilecta mea  
columba mea.

You are altogether beautiful, my love;  
there is no flaw in you  
my beauty,  
my delight,  
my dove.

Loosely taken from the Song of Solomon 4:7.  
Translation:

Tota pulchra es amica mea  
Et macula non est in te  
formosa mea  
dilecta mea  
columba mea.

You are altogether beautiful, my love;  
there is no flaw in you  
my beauty,  
my delight,  
my dove.

Loosely taken from the Song of Solomon 4:7.

# Tota pulchra es

## Ad pares.

(loosely) Song of Solomon, 4:7

Sixtus Dietrich  
from Rhau, Tricinia, 1542, VII.

To - ta pul - - chra es, To - ta  
To - ta pul - - chra es  
16 pul - - chra es a - mi - ca me - -  
pul - - chra es  
31 a - mi - ca me - a, me - - a Et ma - cu - la  
a - - mi - ca me - - - a  
- a a - mi - ca me - - - a Et ma - cu - la  
46 non est, in te, et ma - cu - la non est in  
Et ma - - cu - - la  
non est, in te, non

61

te, non est in te, non est in  
 non est, non est in te, non est in  
 est in te non est in te et ma-cu - la non est in

75

C  
 te, for - mo - sa me - - - - a di - le -  
 C  
 te for - mo - sa me  
 C  
 te for - mo - sa me - - - - a di - le - cta

89

- cta me - a co - lum - ba me - - - - a.  
 (2) # (1)  
 a co - lum - ba me - - a.  
 me - - a co - lum - ba me - - - - a.