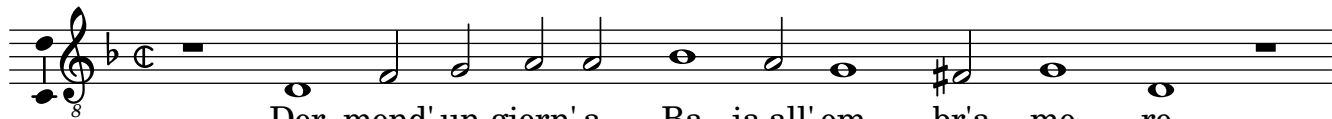
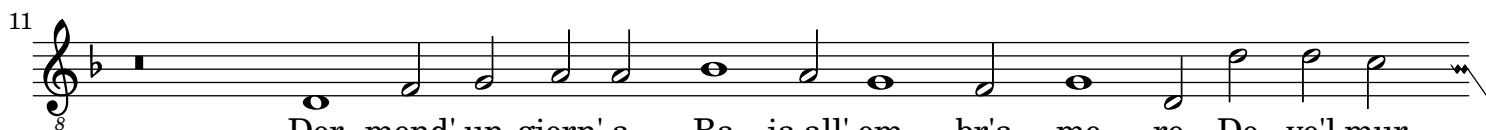


Tenore

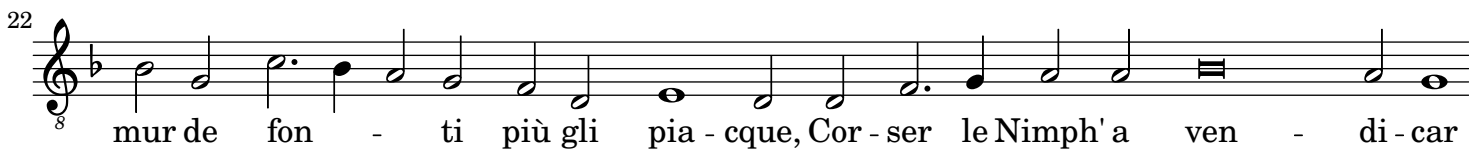
1 2 ③ 4 5



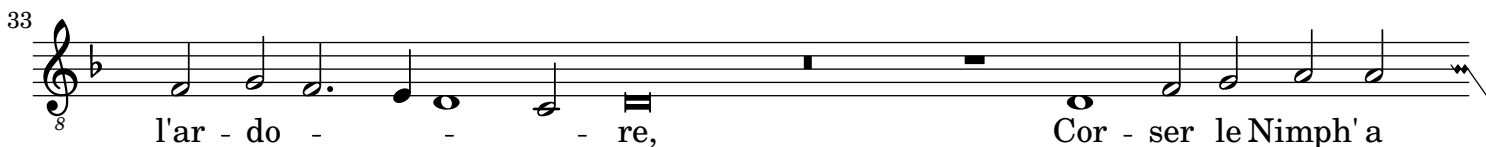
Dor-mend' un giorn' a Ba - ia all' om - br'a - mo - re,



Dor-mend' un giorn' a Ba - ia all' om - br'a - mo - re, Do - ve'l mur-



mur de fon - ti più gli pia - cque, Cor - ser le Nimph'a ven - di - car



l'ar - do - - re, Cor - ser le Nimph'a



ven - di - car l'ar - do - re E la fa - ce gl'a - sco - sen sot - to l'a -



cque, Ch'il cre - de - reb - be, Ch'il cre - de - reb - be dent' a quel li - quo - re



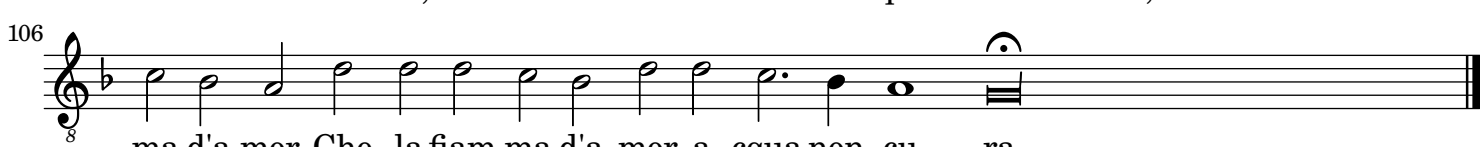
Su - bi - ta ment' e - ter - no fo - co na - cque,



Ond' a quei ba - gni sempr' il cal - do du - ra Che



la fiam - ma d'a - mor, Che la fiam - ma d'a - mor a - cqua non cu - ra, Che la fiam -



ma d'a - mor, Che la fiam - ma d'a - mor a - cqua non cu - ra.