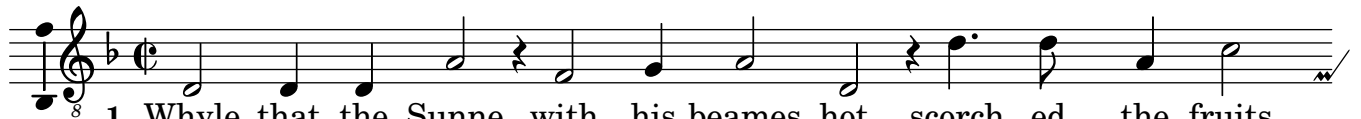
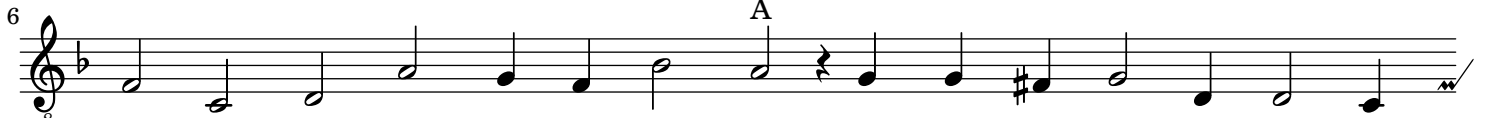


Bassus



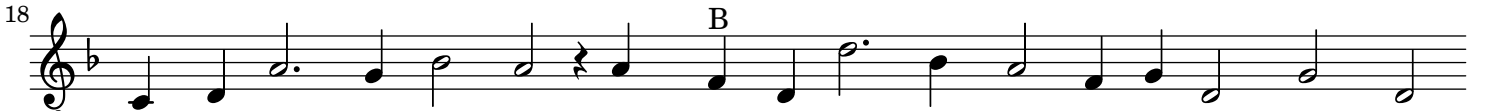
1. Whyle that the Sunne with his beames hot, scorch - ed the fruits
 2. So long as I was in your sight, I was as your
 3. An - o - ther shep - herd you did see, To whome your hart
 4. Sure you have made me pass - ing glad, That you your mind



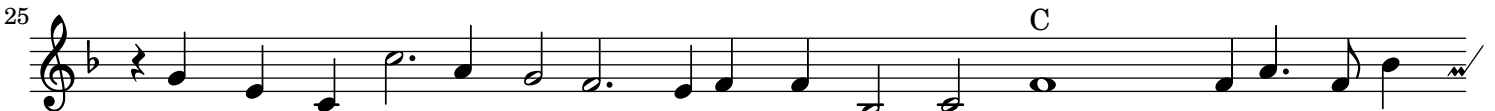
1. in vale & mount-aine, & mount-aine: Phi - lon the shep-herd late for-
 2. hart, your soule, your trea-sure, trea - sure, And e - ver-more you sob'd and
 3. was soone en - chay - ned, en - chay - ned, Full soone your love was leapt from
 4. so soone re - mov - ed, re - mov - ed, Be - fore that I the lea - sure



1. got, sit - ting be - sides a Chris - tall foun-taine, sit - ting be -
 2. sigh'd, Burn - ing in flames be-yond all mea - sure, Burn - ing in
 3. mee, Full soone my place he had ob - tain - ed, Full soone my
 4. had, To chuse you for my best be - lov - ed. To chuse you



1. sides a Chris - tall foun-taine, in sha-dow of a greene Oke tree, Oke tree,
 2. flames be-yond all mea-sure, Three dayes endur'd your Love to mee, to mee,
 3. place he had ob - tain - ed, Soone came a third your love to winne, to winne,
 4. for my best be - lov - ed. For all my love was past and doonne, and doonne,



1. up - pon his pipe this song plaid hee, this song plaid hee: **Refrain:** a-dew love, a -
 2. And it was lost in o - ther three, in o - ther three.
 3. And wee were out and he was in, and he was in.
 4. Two daies be - fore it was be - goonne, it was be - goonne.



dew love, untrue love, a - dew love, a - dew love, your minde is light,



is light, your minde is light, is light, soone lost, soone lost for new love, soone



lost for new love, soone lost, soone lost for new love.