

Bassus



1. Cleare or cloud - ie sweet as A - prill showr - ing, Smoth or
2. Hir grace like June, when earth and trees bee trimde, In best
3. Sweet som - mer spring that breath-eth life and grow - ing, In weedes

6



frown-ing so is hir face to mee, Pleasd or smil-ing like milde May all
at - tire of com - pleat beaut-ies height, Hir love a-gaine like som - mers daies
as in - to hearbs and flow - ers And sees of ser - vice di-vers sorts in

12



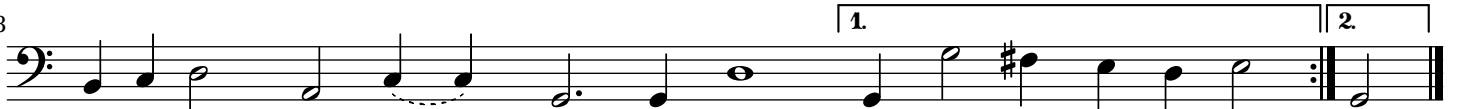
(1)
flour - ing, When skies blew silke and me - dowes car - pets bee, Hir
bee dimde, With lit - tle cloudes of doubt - full con - stant faith, Hir
sow - ing, Some hap - ly seem - ing and some be - ing yours, Raine

17



speech - es notes of that night bird that sing - eth, Who thought all
trust hir doubt, like raine and heat in Skies, Gen - tly thun -
on your hearbs and flow - ers that true - ly serve, And let your

23



sweet yet Jar-ring notes out - ring - eth. Hir speech - es eth.
der - ing, she light - ning to mine eies. Hir trust hir eies.
weeds lack dew and due - ly sterve. Raine on your sterve.