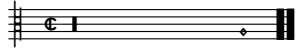


# En amours n'a sinon que bien

Superius

Antoine de Févin

Musical score for two staves. The first staff starts at measure 98 and ends at measure 105. The second staff starts at measure 106 and ends at measure 113. Both staves use a treble clef and a common time signature (C). The first staff contains a melodic line with notes: G4, A4, B4, C5, B4, A4, G4, F4, E4, D4, C4, B3, A3, G3, F3, E3, D3, C3. The second staff contains a melodic line with notes: G4, A4, B4, C5, B4, A4, G4, F4, E4, D4, C4, B3, A3, G3, F3, E3, D3, C3. There are accidentals: a sharp (#) above the final note of the first staff (C5) and a flat (b) below the note G4 in the second staff. The piece ends with a double bar line and repeat dots at the end of the second staff.



# En amours n'a sinon que bien

Tenor

Antoine de Févin

En a - mours n'a si - non  
que bien, Ne mal, qui ne ly  
pen - - - ce;  
A - mours font fai - re main - - tes  
tours, Et main - te con - te - - nan - ce.  
Je le dis pour mon a - my,  
Qui est coin - ctet bien jo - li, Je le  
con - gnois d'an - - fan - - -





# En amours n'a sinon que bien

Bassus

Antoine de Févin

10

20

30

39

48

58

68

77

87

96

105

# En amours n'a sinon que bien

Antoine de Fé

En a - mours n'a  
si - non que bien, Ne mal,  
qui ne ly pen - - -

- - ce; A - mours

font fai - re main - - tes tours, Et

main - te con - - te - - nan - ce.

Je le dis pour mon a - my,

Qui est coin - ctet bien jo - li,

Je le con - gnois d'an -



fan - - - ce,

Il m'ai - me aus - si fai - -

ge luy, Dieu le gard de mes - chan -

ce, Dieu le gard de mes - chan - ce.

The image shows a musical score for three staves. The top staff is a treble clef with a soprano voice line. The middle staff is a treble clef with an alto voice line, containing the lyrics "ce, Dieu le gard de mes - chan - ce." The bottom staff is a bass clef with a bass voice line. The music consists of a series of notes, including a whole note, a dotted quarter note, and several eighth notes. There are accidentals: a flat (b) and a sharp (#) above the notes. The score ends with a double bar line and repeat dots on each staff.