

La Alfonsina

Superius

Johannes Ghiselin (fl. 1491–1507)

Harmonice Musices Odhecaton A (1501)

① 2 3

11

21

34

44

55

68

82

94

106

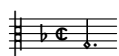
117

A

B

C

D



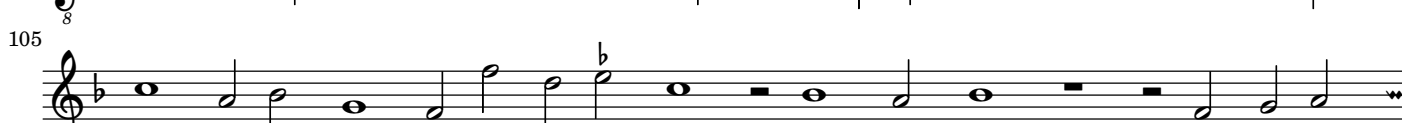
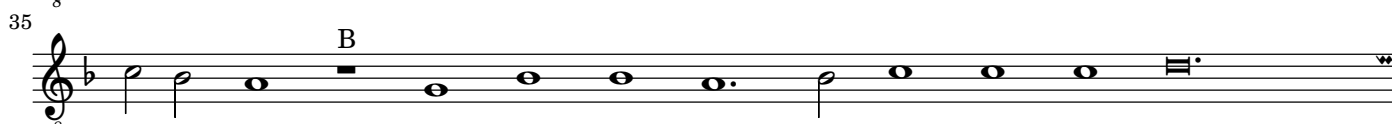
La Alfonsina

Tenor

Johannes Ghiselin (fl. 1491–1507)

Harmonice Musices Odhecaton A (1501)

1 ② 3





La Alfonsina

Bassus

Johannes Ghiselin (fl. 1491–1507)

Harmonice Musices Odhecaton A (1501)

1 2 ③

9

21

33

44

56

68

80

92

105

116

La Alfonsina

Johannes Ghiselin (fl. 1491–1507)
Harmonice Musices Odhecaton A (1501)

Superius

Tenor

Bassus

9

21

34

46

57

C

C

C

b

68

77

D

D

D

89

102

115

A musical score for three staves, likely piano accompaniment. The top staff is in treble clef, the middle in alto clef, and the bottom in bass clef. The key signature has one flat (B-flat). The music consists of a series of notes and rests across 11 measures. The top staff features a melodic line with a sharp sign above the final note. The middle staff has a similar melodic line with a flat sign above the final note. The bottom staff provides a harmonic accompaniment with a flat sign below the first note and another flat sign below the final note. The score ends with a double bar line.