

11. Pavan.

CANTVS.

Antony Holborne

12

24

36



11. Pavan.

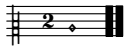
ALTUS.

Antony Holborne

11

24

35



11. Pavan. QUINTUS.

Antony Holborne

13
25
37



11. Pavan.

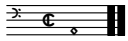
TENOR.

Antony Holborne

14

26

38



11. Pavan.

BASSVS.

Antony Holborne

15

31

11. Pavan.

Antony Holborne

The image displays a musical score for a piece titled "11. Pavan." by Antony Holborne. The score is arranged in five systems, each containing five staves. The first two staves of each system are in treble clef, and the last three are in bass clef. The music is written in a common time signature (C). The notation includes various note values such as quarter, eighth, and sixteenth notes, as well as rests and accidentals. There are repeat signs (double bar lines with dots) and first/second endings (double bar lines with a diagonal slash) throughout the piece. The overall style is characteristic of early 16th-century lute tablature transcriptions.

A musical score consisting of ten staves, arranged in two systems of five staves each. The notation is in a single system, with a repeat sign at the beginning of each system. The first system contains five staves of music, and the second system contains five staves of music. The notation includes various note values, rests, and accidentals, with a key signature of one sharp (F#) and a common time signature (C). The score concludes with a double bar line and repeat dots at the end of the final staff.