



53. [Pavan:] Last will and testament

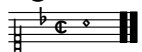
CANTVS.

Antony Holborne

12

22

36



53. [Pavan:] Last will and testament

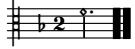
ALTUS.

Antony Holborne

12

23

36

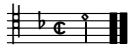


53. [Pavan:] Last will and testament

QUINTUS.

Antony Holborne

Musical score for Quintus part of 'Last will and testament'. The score consists of five staves of music in treble clef, one flat key signature, and common time. The first staff begins with a treble clef, a flat key signature, and a common time signature. The music is written in a simple, rhythmic style. The second staff is marked with a measure rest of 8 and a treble clef. The third staff is marked with a measure rest of 8 and a treble clef. The fourth staff is marked with a measure rest of 8 and a treble clef. The fifth staff is marked with a measure rest of 8 and a treble clef. The score concludes with a double bar line and repeat sign.



53. [Pavan:] Last will and testament

TENOR.

Antony Holborne

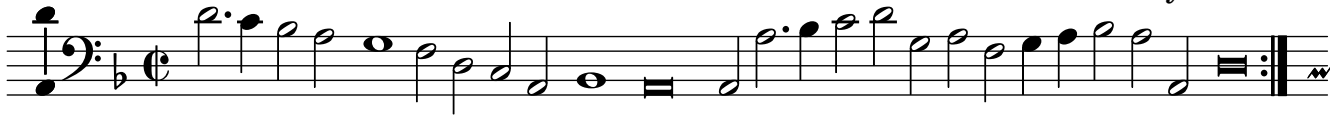
Musical score for Tenor part of 'Last will and testament'. The score consists of four staves of music in treble clef, one flat key signature, and common time. The first staff begins with a treble clef, a flat key signature, and a common time signature. The music is written in a simple, rhythmic style. The second staff is marked with a measure rest of 12 and a treble clef. The third staff is marked with a measure rest of 23 and a treble clef. The fourth staff is marked with a measure rest of 36 and a treble clef. The score concludes with a double bar line and repeat sign.



53. [Pavan:] Last will and testament

BASSVS.

Antony Holborne



53. [Pavan:] Last will and testament

Antony Holborne

The image displays a musical score for the piece "Last will and testament" by Antony Holborne. The score is organized into five systems, each consisting of five staves. The first system includes a bass staff at the bottom, followed by four treble staves. The second system through the fifth system each consist of five treble staves. The music is written in a style characteristic of the English lute or pavan, featuring a mix of eighth and sixteenth notes, rests, and repeat signs. The key signature is one flat (B-flat), and the time signature is common time (C). The notation includes various rhythmic values and accidentals, such as sharps and naturals, indicating the specific pitch and timing of each note.

A musical score consisting of five staves. The first four staves are in treble clef, and the fifth staff is in bass clef. The key signature is one flat (F major or D minor), and the time signature is 4/4. The music features a variety of note values including quarter, eighth, and sixteenth notes, as well as rests. The score concludes with a double bar line and repeat dots on each staff.