

Pavans,
Galiards and Almains,
to be played on June 2
at John Tyson's student recital.

*Made by Antony Holborne Gentleman and
Servant to her most excellent
Majestie.*

Edited by Laura Conrad

Imprinted in London in 1599
this edition April 16, 2014



Contents

Contents	1	25. Patiencia.	6
58. The fruit of love.	2	34. Muy Linda.	8
26. Hermoza.	4	55. The night watch.	10



58. The fruit of love.

CANTUS.

Antony Holborne

15

31



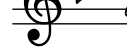
58. The fruit of love.

ALTUS.

Antony Holborne

18

34



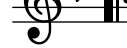
58. The fruit of love.

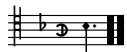
QUINTUS.

Antony Holborne

17

33





58. The fruit of love.

TENOR.

Antony Holborne

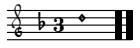
8
14
33

58. The fruit of love.

BASSVS.

Antony Holborne

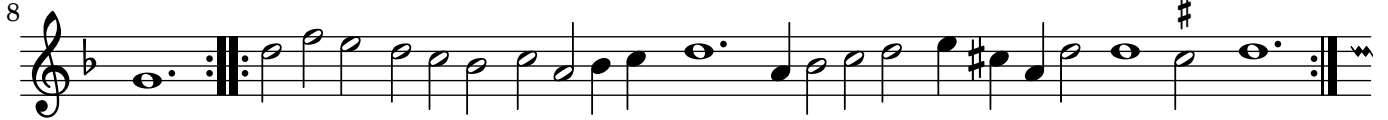
15
31



26. Hermoza.

CANTUS.

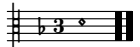
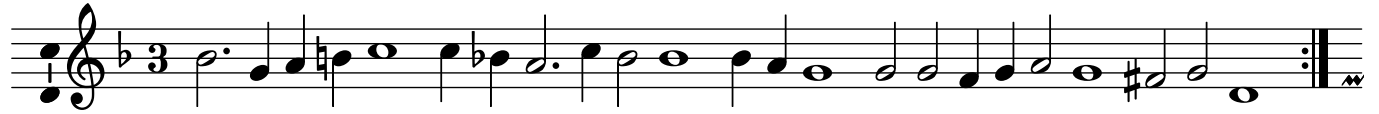
Antony Holborne



26. Hermoza.

ALTUS.

Antony Holborne



26. Hermoza.

QUINTUS.

Antony Holborne





26. Hermoza.

TENOR.

Antony Holborne

8
10
18

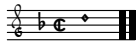


26. Hermoza.

BASSVS.

Antony Holborne

9
9
18



25. Patiencia.

CANTUS.

Antony Holborne

13
23
33
44

25. Patiencia.

TENOR.

Antony Holborne

8
11
23
34
45



25. Patiencia.

ALTUS.

Antony Holborne

13

27

39

25. Patiencia.

QUINTUS.

Antony Holborne

15

29

41

25. Patiencia.

BASSVS.

Antony Holborne

17

32

45

3/4

34. Muy Linda

CANTUS.

Antony Holborne

7

11

17

34. Muy Linda

ALTUS.

Antony Holborne

6

11

17



34. Muy Linda QUINTUS.

Antony Holborne

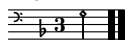
Musical score for Quintus part of 'Muy Linda'. It consists of four staves of music in treble clef, one flat key signature, and 3/4 time signature. The first staff begins with a repeat sign. Measure numbers 7, 12, and 18 are indicated on the left side of the staves.



34. Muy Linda TENOR.

Antony Holborne

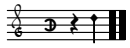
Musical score for Tenor part of 'Muy Linda'. It consists of three staves of music in treble clef, one flat key signature, and 3/4 time signature. The first staff begins with a repeat sign. Measure numbers 8 and 16 are indicated on the left side of the staves.



34. Muy Linda BASSVS.

Antony Holborne

Musical score for Bassus part of 'Muy Linda'. It consists of three staves of music in bass clef, one flat key signature, and 3/4 time signature. The first staff begins with a repeat sign. Measure numbers 8 and 16 are indicated on the left side of the staves.

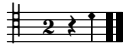


55. The night watch.

CANTVS.

Antony Holborne

Musical score for the Cantus part of 'The night watch'. It consists of three staves of music in treble clef with a key signature of one sharp (F#). The first staff contains the main melody. The second staff, starting at measure 16, includes first and second endings. The third staff, starting at measure 33, includes a second ending and a 'Final.' marking. The piece concludes with a double bar line and repeat sign.

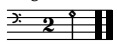


55. The night watch.

TENOR.

Antony Holborne

Musical score for the Tenor part of 'The night watch'. It consists of three staves of music in treble clef with a key signature of one sharp (F#). The first staff contains the main melody. The second staff, starting at measure 17, includes a second ending. The third staff, starting at measure 35, includes first and second endings and a 'Final.' marking. The piece concludes with a double bar line and repeat sign.



55. The night watch.

BASSVS.

Antony Holborne

Musical score for the Bassus part of 'The night watch'. It consists of three staves of music in bass clef with a key signature of one sharp (F#). The first staff contains the main melody. The second staff, starting at measure 16, includes first and second endings. The third staff, starting at measure 35, includes first and second endings and a 'Final.' marking. The piece concludes with a double bar line and repeat sign.



55. The night watch.

ALTUS.

Antony Holborne

Musical score for the Altus part of 'The night watch'. The score is written in treble clef with a key signature of one sharp (F#) and a time signature of 2/4. It consists of five staves of music. The first staff begins with a treble clef, a key signature of one sharp, and a time signature of 2/4. The second staff is marked with a first ending bracket labeled '1. (1)' and a second ending bracket labeled '2.'. The third staff is marked with a first ending bracket labeled '1.' and a second ending bracket labeled '2. (1)'. The fourth staff is marked with a first ending bracket labeled '1.', a second ending bracket labeled '2. (1)', and a 'Final.' marking. The fifth staff begins with a treble clef, a key signature of one sharp, and a time signature of 2/4.

55. The night watch.

QUINTUS.

Antony Holborne

Musical score for the Quintus part of 'The night watch'. The score is written in treble clef with a key signature of one sharp (F#) and a time signature of 2/4. It consists of four staves of music. The first staff begins with a treble clef, a key signature of one sharp, and a time signature of 2/4. The second staff is marked with a first ending bracket labeled '1. (1)' and a second ending bracket labeled '2.'. The third staff is marked with a first ending bracket labeled '1.' and a second ending bracket labeled '2. (1)'. The fourth staff is marked with a first ending bracket labeled '1.', a second ending bracket labeled '2. (1)', and a 'Final.' marking.

¹Alternative endings are editorial.

²facsimile has a dotted whole note.

Serpent Publications
233 Broadway
Cambridge, MA 02139
USA
(617) 661-8097
<http://www.SerpentPublications.org/>

