

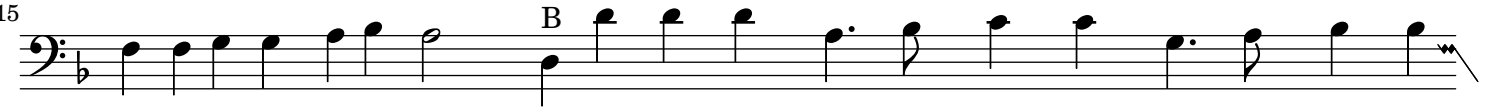
BASSVS.



Lady if I through grieffe, through grieffe and your dis dayning;



judg'd be to live in hel e-ternal-ly remain-ing, ad-judged be (a-las) to live in hell, to live in



hell, e-ternal - ly remain - ing: Of those my burn-ing flames, my burn-ing flames, of



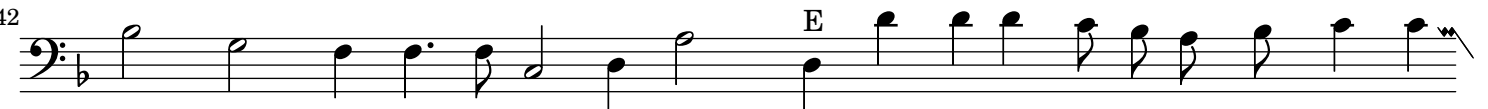
those my burn-ing flames, well shall I rest con - tent, well shall I rest con - tent, con -



tent-ed: O but you I grieve and wayle, O but you I



wayle I wayle, who ther must be tor - ment - ed: For when I shall be



hould you, for when I shal be hould you, your eyes a - lone, a-lone your eyes, will



so delight me, your eyes a-lone, a-lone your eyes your eyes will so de-light mee, de-light



mee, your eyes a-lone a-lone your eyes, La-dy, your eyes a-lone a-lone your eyes will so de-



light me, that once I know no paine can af-fright me; But this (a-las) o would



have kild me I, I, do not doubt you; ther to have ben a-lone with out you,



with out you, But this (a-las) o would have kild mee I, I,



doe not doubt you; ther to have ben a-lone with out you, with out you.