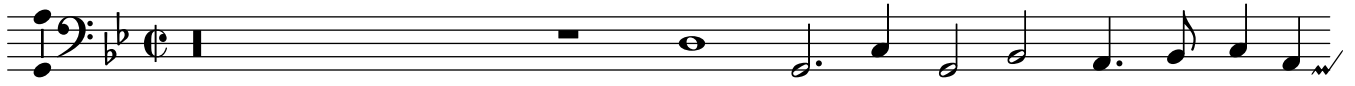


Bassus



In deep dis-tress to live without de-

10



light, Were such a life as few, I think would crave, as few I think would crave.

18



In pangs and pains to lan-guish day and night, to lan-guish day and night, day

24



and night, Were too, too much for one poor soul to have. If weal and woe will

33



thus con - tin - ue strife, if weal and woe will thus con - tin - ue strife,

42



A gen-tle death were good to cut off such a life,

51



a gen-tle death were good to cut off such a life.