

13. Ronde I: *Pour quoy*

Superius

Tielman Susato

Pour quoy non, ne suis-je mo- rir, Pour quoy non, ne
7 doys-je gue- rir, la fin de ma do- len- te vie, quant j'aim- e
14 qui ne m'aim- e pas, et sers sans guer- don a- cque- rir.
21 et sers sans guer- don a- cque- rir. et sers sans guer-
27 don a- cque- rir. et sers sans guer- don a- cque- rir.

13. Ronde I: *Pour quoy*

Altus

Tielman Susato

8
9
17
25

13. Ronde I: *Pour quoy*

Tenor

Tielman Susato

Musical score for Tenor part of '13. Ronde I: Pour quoy' by Tielman Susato. The score is written in treble clef with a common time signature (C). It consists of four staves of music. The first staff begins with a key signature change to one flat (Bb) and a common time signature. The second staff starts at measure 9. The third staff starts at measure 17. The fourth staff starts at measure 25. The piece concludes with a double bar line and repeat dots.

13. Ronde I: *Pour quoy*

Bassus

Tielman Susato

Musical score for Bassus part of '13. Ronde I: Pour quoy' by Tielman Susato. The score is written in bass clef with a common time signature (C). It consists of four staves of music. The first staff begins with a key signature change to one flat (Bb) and a common time signature. The second staff starts at measure 9. The third staff starts at measure 16. The fourth staff starts at measure 25. The piece concludes with a double bar line and repeat dots.

14. Ronde II

Superius

Tielman Susato

Musical score for the Superius part of '14. Ronde II'. It consists of three staves of music in C major, 3/4 time. The first staff begins with a treble clef and a common time signature. The music features a series of eighth and quarter notes, with a repeat sign at the end of the first line. The second staff starts at measure 10 and continues the melody. The third staff starts at measure 19 and concludes the piece with a final cadence.

14. Ronde II

Altus

Tielman Susato

Musical score for the Altus part of '14. Ronde II'. It consists of three staves of music in C major, 3/4 time. The first staff begins with a treble clef and a common time signature. The music features a series of quarter and eighth notes, with a repeat sign at the end of the first line. The second staff starts at measure 10 and continues the melody. The third staff starts at measure 19 and concludes the piece with a final cadence.

14. Ronde II

Tenor

Tielman Susato

Musical score for the Tenor part of '14. Ronde II'. It consists of three staves of music in C major, 3/4 time. The first staff begins with a treble clef and a common time signature. The music features a series of quarter and eighth notes, with a repeat sign at the end of the first line. The second staff starts at measure 9 and continues the melody. The third staff starts at measure 19 and concludes the piece with a final cadence.

14. Ronde II

Bassus

Tielman Susato

Musical score for the Bassus part of '14. Ronde II'. It consists of three staves of music in C major, 3/4 time. The first staff begins with a bass clef and a common time signature. The music features a series of quarter and eighth notes, with a repeat sign at the end of the first line. The second staff starts at measure 10 and continues the melody. The third staff starts at measure 19 and concludes the piece with a final cadence.

15. Ronde III

Superius

Tielman Susato

Musical score for the Superius part of '15. Ronde III'. It consists of three staves of music in C major and 3/4 time. The first staff begins with a treble clef and a common time signature. The second staff starts at measure 9 and ends with a double bar line and repeat sign. The third staff starts at measure 17 and also ends with a double bar line and repeat sign.

15. Ronde III

Altus

Tielman Susato

Musical score for the Altus part of '15. Ronde III'. It consists of three staves of music in C major and 3/4 time. The first staff begins with a treble clef and a common time signature. The second staff starts at measure 9 and ends with a double bar line and repeat sign. The third staff starts at measure 17 and also ends with a double bar line and repeat sign.

15. Ronde III

Tenor

Tielman Susato

Musical score for the Tenor part of '15. Ronde III'. It consists of three staves of music in C major and 3/4 time. The first staff begins with a treble clef and a common time signature. The second staff starts at measure 10 and ends with a double bar line and repeat sign. The third staff starts at measure 18 and also ends with a double bar line and repeat sign.

15. Ronde III

Bassus

Tielman Susato

Musical score for the Bassus part of '15. Ronde III'. It consists of three staves of music in C major and 3/4 time. The first staff begins with a bass clef and a common time signature. The second staff starts at measure 9 and ends with a double bar line and repeat sign. The third staff starts at measure 17 and also ends with a double bar line and repeat sign.

16. Ronde IV

Superius

Tielman Susato

Musical score for the Superius part of '16. Ronde IV'. It consists of three staves of music in G major and 3/4 time. The first staff contains measures 1 through 7. The second staff, starting at measure 8, contains measures 8 through 16 and includes a repeat sign at the beginning. The third staff, starting at measure 17, contains measures 17 through 24 and ends with a double bar line and repeat dots.

16. Ronde IV

Altus

Tielman Susato

Musical score for the Altus part of '16. Ronde IV'. It consists of three staves of music in G major and 3/4 time. The first staff contains measures 1 through 7. The second staff, starting at measure 8, contains measures 8 through 16 and includes a repeat sign at the beginning. The third staff, starting at measure 17, contains measures 17 through 24 and ends with a double bar line and repeat dots.

16. Ronde IV

Tenor

Tielman Susato

Musical score for the Tenor part of '16. Ronde IV'. It consists of three staves of music in G major and 3/4 time. The first staff contains measures 1 through 7. The second staff, starting at measure 8, contains measures 8 through 16 and includes a repeat sign at the beginning. The third staff, starting at measure 17, contains measures 17 through 24 and ends with a double bar line and repeat dots.

16. Ronde IV

Bassus

Tielman Susato

Musical score for the Bassus part of '16. Ronde IV'. It consists of three staves of music in G major and 3/4 time. The first staff contains measures 1 through 7. The second staff, starting at measure 8, contains measures 8 through 16 and includes a repeat sign at the beginning. The third staff, starting at measure 17, contains measures 17 through 24 and ends with a double bar line and repeat dots.

17. Ronde V

Superius

Tielman Susato

Musical score for the Superius part of '17. Ronde V'. It consists of three staves of music in G minor and common time. The first staff begins with a treble clef and a common time signature. The second staff is marked with a measure rest of 11 measures. The third staff is marked with a measure rest of 23 measures. The piece concludes with a double bar line and repeat dots.

17. Ronde V

Altus

Tielman Susato

Musical score for the Altus part of '17. Ronde V'. It consists of three staves of music in G minor and common time. The first staff begins with a treble clef and a common time signature. The second staff is marked with a measure rest of 11 measures. The third staff is marked with a measure rest of 22 measures. The piece concludes with a double bar line and repeat dots.

17. Ronde V

Tenor

Tielman Susato

Musical score for the Tenor part of '17. Ronde V'. It consists of three staves of music in G minor and common time. The first staff begins with a treble clef and a common time signature. The second staff is marked with a measure rest of 11 measures. The third staff is marked with a measure rest of 22 measures. The piece concludes with a double bar line and repeat dots.

17. Ronde V

Bassus

Tielman Susato

Musical score for the Bassus part of '17. Ronde V'. It consists of three staves of music in G minor and common time. The first staff begins with a bass clef and a common time signature. The second staff is marked with a measure rest of 11 measures. The third staff is marked with a measure rest of 22 measures. The piece concludes with a double bar line and repeat dots.

18. Ronde VI

Superius

Tielman Susato

Musical score for the Superius part of '18. Ronde VI'. It consists of three staves of music in G minor (one flat) and common time. The first staff starts at measure 1. The second staff begins at measure 9 and ends with a double bar line and repeat dots. The third staff begins at measure 17 and also ends with a double bar line and repeat dots.

18. Ronde VI

Altus

Tielman Susato

Musical score for the Altus part of '18. Ronde VI'. It consists of three staves of music in G minor (one flat) and common time. The first staff starts at measure 1. The second staff begins at measure 9 and ends with a double bar line and repeat dots. The third staff begins at measure 17 and also ends with a double bar line and repeat dots.

18. Ronde VI

Tenor

Tielman Susato

Musical score for the Tenor part of '18. Ronde VI'. It consists of three staves of music in G minor (one flat) and common time. The first staff starts at measure 1. The second staff begins at measure 9 and ends with a double bar line and repeat dots. The third staff begins at measure 17 and also ends with a double bar line and repeat dots.

18. Ronde VI

Bassus

Tielman Susato

Musical score for the Bassus part of '18. Ronde VI'. It consists of three staves of music in G minor (one flat) and common time. The first staff starts at measure 1. The second staff begins at measure 9 and ends with a double bar line and repeat dots. The third staff begins at measure 17 and also ends with a double bar line and repeat dots.

22. Salterelle

Superius

Tielman Susato

Musical score for the Superius part of '22. Salterelle'. It consists of three staves of music in 3/8 time, starting with a treble clef and a key signature of one flat (B-flat). The first staff begins with a common time signature 'C' and a 3/8 time signature. The second and third staves are marked with measure numbers 9 and 17 respectively. The piece concludes with a double bar line and repeat dots.

22. Salterelle

Altus

Tielman Susato

Musical score for the Altus part of '22. Salterelle'. It consists of three staves of music in 3/8 time, starting with a treble clef and a key signature of one flat (B-flat). The first staff begins with a common time signature 'C' and a 3/8 time signature. The second and third staves are marked with measure numbers 9 and 17 respectively. The piece concludes with a double bar line and repeat dots.

22. Salterelle

Tenor

Tielman Susato

Musical score for the Tenor part of '22. Salterelle'. It consists of three staves of music in 3/8 time, starting with a treble clef and a key signature of one flat (B-flat). The first staff begins with a common time signature 'C' and a 3/8 time signature. The second and third staves are marked with measure numbers 9 and 17 respectively. The piece concludes with a double bar line and repeat dots.

22. Salterelle

Bassus

Tielman Susato

Musical score for the Bassus part of '22. Salterelle'. It consists of three staves of music in 3/8 time, starting with a bass clef and a key signature of one flat (B-flat). The first staff begins with a common time signature 'C' and a 3/8 time signature. The second and third staves are marked with measure numbers 9 and 17 respectively. The piece concludes with a double bar line and repeat dots.

19. Ronde VII: *Il estoit une fillette*

Superius

Tielman Susato

Musical score for the Superius part of '19. Ronde VII: Il estoit une fillette'. The score is written in G major (one flat) and common time (C). It consists of five staves of music. The first staff begins with a treble clef and a common time signature. The music is a single melodic line. Measure numbers 9, 17, 24, and 33 are indicated at the start of their respective staves. The piece concludes with a double bar line and repeat dots.

19. Ronde VII: *Il estoit une fillette*

Altus

Tielman Susato

Musical score for the Altus part of '19. Ronde VII: Il estoit une fillette'. The score is written in G major (one flat) and common time (C). It consists of five staves of music. The first staff begins with a treble clef and a common time signature. The music is a single melodic line. Measure numbers 9, 17, 24, and 33 are indicated at the start of their respective staves. The piece concludes with a double bar line and repeat dots.

19. Ronde VII: *Il estoit une fillette*

Tenor

Tielman Susato

9
18
25
33

19. Ronde VII: *Il estoit une fillette*

Bassus

Tielman Susato

9
17
24
32

20. Ronde VIII: *Mille ducas en vostre bource*

Superius

Tielman Susato

Musical score for the Superius part of 'Mille ducas en vostre bource'. It consists of three staves of music in G minor, 3/4 time. The first staff starts at measure 1 and ends with a double bar line and repeat sign. The second staff starts at measure 10 and ends with a double bar line and repeat sign. The third staff starts at measure 19 and ends with a double bar line and repeat sign.

20. Ronde VIII: *Mille ducas en vostre bource*

Altus

Tielman Susato

Musical score for the Altus part of 'Mille ducas en vostre bource'. It consists of three staves of music in G minor, 3/4 time. The first staff starts at measure 1 and ends with a double bar line and repeat sign. The second staff starts at measure 10 and ends with a double bar line and repeat sign. The third staff starts at measure 19 and ends with a double bar line and repeat sign.

20. Ronde VIII: *Mille ducas en vostre bource*

Tenor

Tielman Susato

Musical score for the Tenor part of 'Mille ducas en vostre bource'. It consists of three staves of music in G minor, 3/4 time. The first staff starts at measure 1 and ends with a double bar line and repeat sign. The second staff starts at measure 10 and ends with a double bar line and repeat sign. The third staff starts at measure 19 and ends with a double bar line and repeat sign.

20. Ronde VIII: *Mille ducas en vostre bource*

Bassus

Tielman Susato

Musical score for the Bassus part of 'Mille ducas en vostre bource'. It consists of three staves of music in G minor, 3/4 time. The first staff starts at measure 1 and ends with a double bar line and repeat sign. The second staff starts at measure 10 and ends with a double bar line and repeat sign. The third staff starts at measure 19 and ends with a double bar line and repeat sign.

21. Ronde IX

Superius

Tielman Susato

Musical score for the Superius part of 21. Ronde IX. The score consists of four staves of music in treble clef, 3/4 time. The first staff begins with a repeat sign and a fermata. The second staff starts at measure 7. The third staff starts at measure 14 and includes the instruction 'Aliud' above the staff. The fourth staff starts at measure 22 and ends with a fermata.

21. Ronde IX

Altus

Tielman Susato

Musical score for the Altus part of 21. Ronde IX. The score consists of four staves of music in treble clef, 3/4 time. The first staff begins with a repeat sign and a fermata. The second staff starts at measure 8. The third staff starts at measure 15 and includes the instruction 'Aliud' above the staff. The fourth staff starts at measure 22 and ends with a fermata.

21. Ronde IX

Tenor

Tielman Susato

8

8

15 Aliud

22

21. Ronde IX

Bassus

Tielman Susato

7

14 Aliud

22

23. Les quatre Branles

Superius

Tielman Susato

Musical score for the Superius part of 'Les quatre Branles'. It consists of five staves of music in G major and 3/4 time. The first staff starts at measure 1. The second staff starts at measure 7 and contains a repeat sign. The third staff starts at measure 14 and contains a repeat sign. The fourth staff starts at measure 21. The fifth staff starts at measure 28 and ends with a double bar line and repeat sign.

23. Les quatre Branles

Altus

Tielman Susato

Musical score for the Altus part of 'Les quatre Branles'. It consists of five staves of music in G major and 3/4 time. The first staff starts at measure 1. The second staff starts at measure 9 and contains a repeat sign. The third staff starts at measure 17 and contains a repeat sign. The fourth staff starts at measure 25. The fifth staff starts at measure 33 and ends with a double bar line and repeat sign.

23. Les quatre Branles

Tenor

Tielman Susato

Musical score for Tenor part of 'Les quatre Branles' by Tielman Susato. The score is written in treble clef with a common time signature (C). It consists of five staves of music. The first staff starts with a treble clef and a common time signature. The second staff begins with a measure rest of 7 measures, followed by a repeat sign. The third staff begins with a measure rest of 14 measures, followed by a repeat sign. The fourth staff begins with a measure rest of 21 measures. The fifth staff begins with a measure rest of 28 measures and ends with a double bar line and repeat sign.

23. Les quatre Branles

Bassus

Tielman Susato

Musical score for Bassus part of 'Les quatre Branles' by Tielman Susato. The score is written in bass clef with a common time signature (C). It consists of four staves of music. The first staff starts with a bass clef and a common time signature. The second staff begins with a measure rest of 9 measures, followed by a repeat sign. The third staff begins with a measure rest of 18 measures. The fourth staff begins with a measure rest of 26 measures and ends with a double bar line and repeat sign.

24. Fagot

Superius

Tielman Susato

Three staves of musical notation for the Superius part. The first staff begins with a treble clef, a 3/4 time signature, and a key signature of one flat. It contains a series of rests followed by a double bar line and a repeat sign, then a melodic line of quarter and eighth notes. The second and third staves continue the melody with similar rhythmic patterns, ending with a double bar line and repeat sign.

24. Fagot

Altus

Tielman Susato

Three staves of musical notation for the Altus part. The first staff begins with a treble clef, a 3/4 time signature, and a key signature of one flat. It contains a series of rests followed by a double bar line and a repeat sign, then a melodic line of quarter and eighth notes. The second and third staves continue the melody with similar rhythmic patterns, ending with a double bar line and repeat sign.

24. Fagot

Tenor

Tielman Susato

Three staves of musical notation for the Tenor part. The first staff begins with a treble clef, a 3/4 time signature, and a key signature of one flat. It contains a series of rests followed by a double bar line and a repeat sign, then a melodic line of quarter and eighth notes. The second and third staves continue the melody with similar rhythmic patterns, ending with a double bar line and repeat sign.

24. Fagot

Bassus

Tielman Susato

Three staves of musical notation for the Bassus part. The first staff begins with a bass clef, a 3/4 time signature, and a key signature of one flat. It contains a series of rests followed by a double bar line and a repeat sign, then a melodic line of quarter and eighth notes. The second and third staves continue the melody with similar rhythmic patterns, ending with a double bar line and repeat sign.

25. Hoboecken dans

Superius

Tielman Susato

Musical score for the Superius part of '25. Hoboecken dans'. The score is written in treble clef with a 3/4 time signature. It begins with a repeat sign. The melody consists of quarter and eighth notes. Measure numbers 8, 15, and 21 are indicated on the left side of the staves. The piece concludes with a double bar line and repeat dots.

25. Hoboecken dans

Altus

Tielman Susato

Musical score for the Altus part of '25. Hoboecken dans'. The score is written in treble clef with a 3/4 time signature. It begins with a repeat sign. The melody consists of quarter and eighth notes. Measure numbers 8, 15, and 21 are indicated on the left side of the staves. The piece concludes with a double bar line and repeat dots.

25. Hoboecken dans

Tenor

Tielman Susato

Musical score for Tenor part of '25. Hoboecken dans'. The score is written in 3/4 time and consists of four staves. The first staff begins with a treble clef, a 3/4 time signature, and a key signature of one flat (B-flat). It starts with a repeat sign and contains a sequence of notes: G4, A4, B4, C5, B4, A4, G4, F4, E4, D4, C4. The second staff starts at measure 8, the third at measure 15, and the fourth at measure 21. The piece concludes with a double bar line and repeat dots.

25. Hoboecken dans

Bassus

Tielman Susato

Musical score for Bassus part of '25. Hoboecken dans'. The score is written in 3/4 time and consists of four staves. The first staff begins with a bass clef, a 3/4 time signature, and a key signature of one flat (B-flat). It starts with a repeat sign and contains a sequence of notes: G3, A3, B3, C4, B3, A3, G3, F3, E3, D3, C3. The second staff starts at measure 8, the third at measure 15, and the fourth at measure 21. The piece concludes with a double bar line and repeat dots.

26. De post

Superius

Tielman Susato

Musical notation for the Superius part of '26. De post'. It consists of two staves. The first staff begins with a treble clef, a common time signature (C), and a key signature of one flat (B-flat). The melody is written in quarter and eighth notes. A repeat sign is at the end of the first staff. The second staff begins with a measure rest of 9 measures, followed by the continuation of the melody. It also ends with a repeat sign.

26. De post

Altus

Tielman Susato

Musical notation for the Altus part of '26. De post'. It consists of two staves. The first staff begins with a treble clef, a common time signature (C), and a key signature of one flat (B-flat). The melody is written in quarter and eighth notes. A measure rest of 8 measures is indicated at the beginning. A repeat sign is at the end of the first staff. The second staff begins with a measure rest of 9 measures, followed by the continuation of the melody. It also ends with a repeat sign.

26. De post

Tenor

Tielman Susato

Musical notation for the Tenor part of '26. De post'. It consists of two staves. The first staff begins with a treble clef, a common time signature (C), and a key signature of one flat (B-flat). The melody is written in quarter and eighth notes. A measure rest of 8 measures is indicated at the beginning. A repeat sign is at the end of the first staff. The second staff begins with a measure rest of 9 measures, followed by the continuation of the melody. It also ends with a repeat sign.

26. De post

Bassus

Tielman Susato

Musical notation for the Bassus part of '26. De post'. It consists of two staves. The first staff begins with a bass clef, a common time signature (C), and a key signature of one flat (B-flat). The melody is written in quarter and eighth notes. A measure rest of 9 measures is indicated at the beginning. A repeat sign is at the end of the first staff. The second staff begins with a measure rest of 9 measures, followed by the continuation of the melody. It also ends with a repeat sign.

De post (Reprise)

Superius

Tielman Susato

9

Musical notation for the Superius part of 'De post (Reprise)'. It consists of two staves. The first staff is in treble clef with a 3/4 time signature. The second staff is in treble clef with a common time signature. Both staves contain a sequence of notes and rests, ending with a double bar line and repeat dots.

De post (Reprise)

Altus

Tielman Susato

9

Musical notation for the Altus part of 'De post (Reprise)'. It consists of two staves. The first staff is in treble clef with a 3/4 time signature. The second staff is in treble clef with a common time signature. Both staves contain a sequence of notes and rests, ending with a double bar line and repeat dots.

De post (Reprise)

Tenor

Tielman Susato

9

Musical notation for the Tenor part of 'De post (Reprise)'. It consists of two staves. The first staff is in treble clef with a 3/4 time signature. The second staff is in treble clef with a common time signature. Both staves contain a sequence of notes and rests, ending with a double bar line and repeat dots.

De post (Reprise)

Bassus

Tielman Susato

9

Musical notation for the Bassus part of 'De post (Reprise)'. It consists of two staves. The first staff is in bass clef with a 3/4 time signature. The second staff is in bass clef with a common time signature. Both staves contain a sequence of notes and rests, ending with a double bar line and repeat dots.

27. Danse de Hercules oft maticine

Superius

Tielman Susato

Two staves of musical notation for the Superius part. The first staff begins with a treble clef, a common time signature, and a key signature of one flat. The melody consists of a sequence of eighth and quarter notes. A measure rest of 9 measures is indicated at the start of the second staff, which continues the melody and ends with a double bar line and repeat dots.

27. Danse de Hercules oft maticine

Altus

Tielman Susato

Two staves of musical notation for the Altus part. The first staff begins with a treble clef, a common time signature, and a key signature of one flat. The melody features a mix of eighth and quarter notes. A measure rest of 9 measures is indicated at the start of the second staff, which continues the melody and ends with a double bar line and repeat dots.

27. Danse de Hercules oft maticine

Tenor

Tielman Susato

Two staves of musical notation for the Tenor part. The first staff begins with a treble clef, a common time signature, and a key signature of one flat. The melody consists of eighth and quarter notes. A measure rest of 9 measures is indicated at the start of the second staff, which continues the melody and ends with a double bar line and repeat dots.

27. Danse de Hercules oft maticine

Bassus

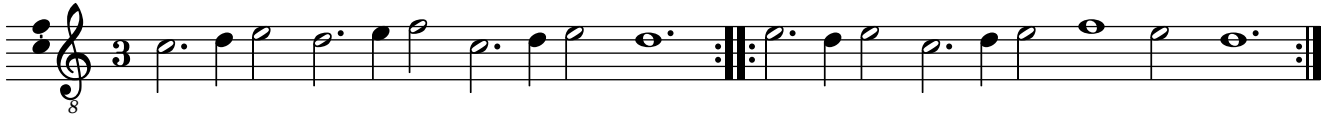
Tielman Susato

Two staves of musical notation for the Bassus part. The first staff begins with a bass clef, a common time signature, and a key signature of one flat. The melody consists of eighth and quarter notes. A measure rest of 9 measures is indicated at the start of the second staff, which continues the melody and ends with a double bar line and repeat dots.

28. De matrigale

Superius

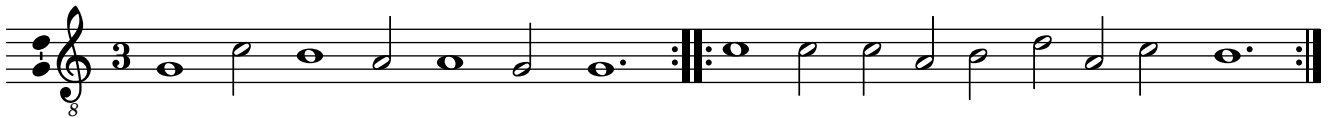
Tielman Susato



28. De matrigale

Altus

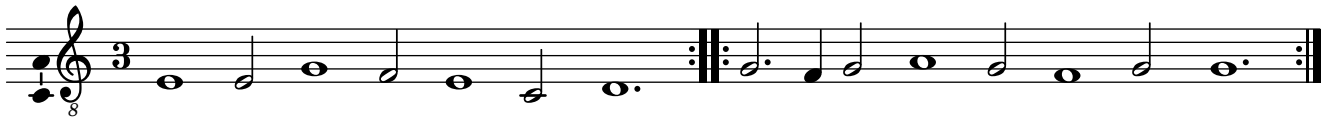
Tielman Susato



28. De matrigale

Tenor

Tielman Susato



28. De matrigale

Bassus

Tielman Susato

